

TAIPEI  
CYCLE

# SHOW DAILY

THURSDAY



**TAIWAN  
EXCELLENCE**

Visit  
**Taiwan  
Excellence  
Pavilion**

on the 3rd floor &  
**Booth L0318**  
on the 4th floor



Organized by

 Bureau of Foreign Trade, MOEA

 Taiwan External Trade Development Council (TAITRA)

經濟部國際貿易局廣告

## INSIDE:

What's on today  
Show highlights

Trade wars  
Bags & panniers  
Hall 3 exhibitors  
S-Pedelec accessories  
e-MTB wheels & hubs  
Brakes & components  
Production machinery  
New Product highlights

Taiwan Vice President Dr. Chen Chien-Jen, who opened Taipei Cycle yesterday, looks on as KMC chairman Robert Wu (right) greets TAITRA chairman James C.F. Huang.

ENGLISH

日本語

中文

TAIPEI  
CYCLE BOOTH  
J0512



**M-WAVE**

YOUR WORLD OF CYCLING

Booth: F0512


# DAPU

Mid Drive Systems




[dapumotors.com](http://dapumotors.com)


**TODAY**  
November 1  
Taipei  
**22°C (72°F)**  
Rain



**TONIGHT**  
**20°C (68°F)**  
Rain



**TOMORROW**  
**24°C (75°F)**  
Rain



## Contact Us

Here's how to reach the key staff of the Taipei Cycle and TaiSPO Show Dailies:

### Advertising

Tom Kavanagh, Publisher  
[tom@bikeshowdaily.com](mailto:tom@bikeshowdaily.com)

Taipei Show Daily Editorial  
Doug McClellan,  
Editor-in-Chief

[TaipeiShowDaily@gmail.com](mailto:TaipeiShowDaily@gmail.com)  
+1.505.660.9957



Inside the robot mascot at Topeak's booth is owner Louis Chuang's son.

## Table of Contents

Vox Pop: trade wars & the bike business .....	4
<b>What's on today</b> .....	4
E-bike boost for Taiwan exports .....	6
Tariffs and trade: EU/US/China .....	10
Miga helmets & Reverse components .....	11
Overview: <b>eMTB wheels &amp; hubs</b> .....	12
Taipei Cycle Forum preview .....	14
Overview: <b>Disc brakes</b> .....	15
Overview: <b>Bags &amp; Panniers</b> .....	16
Overview: <b>Production equipment</b> .....	18
Overview: <b>S-pedelec accessories</b> .....	20
Hall 3 exhibitor roundup .....	22
<b>New Product highlights</b> .....	23

新たな道を開く幅広タイヤ .....	29
新総括：ライト .....	31
新製品 .....	33
総括：サングラス .....	36

共享單車 .....	37
台灣自行車因e-bike另起新局 .....	39
矽膠手握新星 .....	39
以色列進入自行車產業 .....	39
新品介紹 .....	41




**HUTCHINSON®**

**• LIMITED EDITION •**  
Discover new Skeleton tan walls  
limited edition on our **BOOTH N1114**

# SKELETON

THE NEW HUTCHINSON XC WEAPON  
Tested and developed with our best athletes

David Valero, MMR Factory Racing Team  
« The Skeleton has quickly become my n°1 tire choice for competition and for the World Cup. »

f i YouTube  
[www.hutchinsontires.com](http://www.hutchinsontires.com)

# Vox Pop

## How is the U.S.-China trade war and the EU anti-dumping review affecting your business?



**Paul Li**  
Marudean (Edge Design)  
Taichung City, Taiwan

Most of our market is in Europe and the UK, but anti-dumping is not really an issue since we are all about frames and components and there are zero duties on those. Because there is already too much price competition in the U.S. market, we only have a small exposure there.

The U.S.-China trade war can't last long. It's like a husband and wife having a quarrel. There can't be a divorce in this case because both sides are too involved with each other. The solution is not divorce. For the short term there will be some impact. They will find a way out in the long term.



**Tom Wu**  
Quang Yu Enterprise (GVR helmets)  
Tainan City, Taiwan

Because helmets are not yet on the trade war list, we are not facing any pressure. But who knows what is coming? Maybe our products will be included.

Conditions are continually changing, so we continually keep working to come up with new products. We will be in a good position to face whatever changes are coming, short- or long-term.



**Jacky Huang**  
Axman  
Changhua County, Taiwan

At the moment I haven't seen any big effect. It's just talk — whether and how to move out of China. Things change all the time anyway.

The difference lately is that things have speeded up a bit, that's all. Customers normally consider the supply chain, the cost, and quality. But right now there's something more,

the non-market issue. We only have a factory in Taiwan, so we won't be affected anyway.

There are always good and bad aspects of everything. For a company to move to Southeast Asia is good in the short term. But if more and more companies move out of China to Southeast Asia and start to export a lot, this may attract attention from [European regulators].



**Kenny Liao**  
Youzu Metal  
Changhua County, Taiwan

We are facing increased price pressure due to companies relocating back to Taiwan. They are offering the same price to their customers, which means a much more competitive environment for us. On one hand our orders have increased. On the other hand, prices are not increasing — margins are thinner.

We also make e-bike motor and battery housings, which are much larger than the sort of products we usually focus on. But we still face increasing price pressure which cuts back the other way.

Our work force only relies on 10 percent foreign labor, and our tradition is to employ locals as much as possible. This may have to change in the future.



**Johnson Li**  
First Components  
Taichung City, Taiwan

Business has dropped quite a bit this year, but this has only a little bit to do with these issues. There is no direct impact as yet. Customers are uncertain about what is actually going to happen, so they are holding off on orders. That's the actual effect right now.

[European] buyers now are doing evaluations. Everything has happened so quickly, they are thinking about whether to buy from Taiwan or Eastern Europe. If a company wants to relocate back to Taiwan you need a minimum of 40 percent of product sourced from Taiwan — costs will be inevitably higher.

Generally speaking, there hasn't been any real action yet, so it's really a case of watch-this-space. ■ GR/SD

## What's on at the show Thursday, November 1

All events are at the Nangang Exhibition Hall unless otherwise noted.

### GENERAL SHOW INFORMATION

**Taipei Cycle**  
**Wednesday – Friday:**  
**Hours: 9 a.m. – 6 p.m.**

**Saturday (Public Day):**  
**9 a.m. – 3 p.m.**

Venues: Nangang Exhibition Center and Taipei World Trade Center (TWTC) Hall 3

### All Day

**Taipei Cycle d&i Pavilion**  
4F/L0118

**Themed Areas:**  
Internet of Bikes (IoT)  
Start-ups Zone  
TWTC Hall 3

**Theme Pavilions:**  
Korea Pavilion (New)  
EU Pavilion  
Italy Pavilion  
Japan Pavilion

**New Product Launch**  
4F/M Lobby

## Thursday, November 1

### All Day

**Taipei Cycle d&i Pavilion**  
4F/L0118

**Taipei Cycle Forum**  
**4F/Conference Room 401**  
(See below for detailed schedule)

**New Product Launch**  
**4F/M Lobby**  
(See page 6 for detailed schedule)

**IBDC Forum**  
**4F/Conference Room 402**

**Taipei Power Forum**  
**4F/Conference Room 403**

**EEN Procurement Meeting**  
**Conference Room 504C**

### Scheduled events

10 a.m. – 12 noon  
**MOST/TAITRA press conference**  
Hall 3/Smart Cycling Pavilion

1 – 2 p.m.  
**Intelligence #Demo**  
Hall 3/Taipei Cycle+ Smart Cycling Pavilion

## Friday, November 2

### All Day

**Taipei Cycle d&i Pavilion**  
4F/L0118

**Taipei Cycle Forum**  
4F/Conference Room 401

**IBDC Forum**  
4F/Conference Room 402

### Scheduled Events

10 a.m. – 12 noon  
**Bike Culture Forum**  
Hall 3/Taipei Cycle + Smart Cycling Pavilion

2 – 4 p.m.  
**Bike Travel Talks**  
Hall 3/Taipei Cycle + Smart Cycling Pavilion

## Saturday, November 3

**Public Day at Taipei Cycle**

### All Day

**New Product Launch**  
4F/M Lobby

### Scheduled Events

10 a.m. – 1 p.m.  
**1 on 1 Sprint Roller Racing**  
Hall 3 / Taipei Cycle + Smart Cycling Pavilion

*Hosting an event at your booth? Email us at TaipeiShowDaily@gmail.com before 2 p.m. today and we'll include it in tomorrow's Taipei Show Daily.*

## 2018 Free Shuttle Bus Schedule

**TWTC Exhibition Hall 3 to/from Nangang Exhibition Hall (round-trip)**

**Oct. 31 – Nov. 2:** 8 a.m. to 6:30 p.m.  
**Nov. 3:** 8 a.m. to 1:30 p.m.  
Buses leave every 15 - 20 minutes

On Nov. 3, the last bus departs Nangang at 1 p.m. and the last bus departs TWTC Hall 3 at 1:30 p.m.

**Free Hotel Shuttles from Nangang Exhibition Hall**

**Oct. 31 – Nov. 2:** Buses depart Nangang at 5:45, 6, 6:15 and 6:30 p.m.  
**Nov. 3:** Buses depart Nangang at 2:45, 3, 3:15 and 3:30 p.m.

**Route A:** Courtyard Marriott (Nangang MRT Station) | Gallery Hotel | Grand Victoria Hotel

**Route B:** Hotel Éclat Taipei | Shangri-La's Far Eastern Plaza Hotel Taipei | Howard Plaza Hotel Taipei (MRT Zhongxiao Fuxing Station) | Fullon Hotel Taipei | Miramar Garden Taipei

**Route C:** Taipei Fullerton Hotel-Nan Jing East | Brother Hotel | Sunworld Dynasty Taipei- | Sunworld Dynasty Taipei | The Evergreen Laurel Hotel Taipei

**Route D:** The Ambassador Hotel Taipei | The Imperial Hotel Taipei (MRT Zhongshan Elementary School Station) | The Grand Hotel

**Route E:** Caesar Park (MRT Taipei Main Station) | Cosmos Hotel Taipei | Palaid de Chine | Royal Seasons Hotel | Taipei Garden Hotel

# XMOD ROAD

[www.mirandabikeparts.com](http://www.mirandabikeparts.com)

Booth L1216



# Miranda

The European Bike Fundamentals.

Cofinanciado por:

COMPETE  
2020

PORTUGAL  
2020



UNÃO EUROPEIA  
Fundos Europeus  
Crescimento e Emprego

# Taiwan exports get a charge from e-bikes

Electric bikes continue to electrify Taiwan’s bike industry.

Exports of complete e-bikes rose by 48 percent by units and 52 percent in value for the first three quarters of 2018 compared with the same period of 2017, according to preliminary official statistics released yesterday.

Taiwan manufacturers shipped 195,000 e-bikes valued at \$269 million during the period, at an average unit price of \$1,378.

The category boosted export figures for all bicycles. Thanks to the much higher value of e-bikes, Taiwan’s average unit price for all complete bicycles leaped past \$600 for the first time, rising 23 percent to \$659.

That’s especially impressive because e-bikes accounted for less than 12 percent of the total number of bikes exported from Taiwan.

The Taiwan Bicycle Association compiled the numbers from a preliminary report from the Ministry of Finance.

More expensive e-bikes also helped make up for a drop in the number of units shipped around the world.

Taiwan bikemakers exported a total of 1.65 million complete bikes, down 7 percent over the comparable period of 2017. But these exports were valued at \$1.09 billion, an increase of more than 14 percent.

This rising tide also lifted exports of parts and components, which climbed 14 percent in value to \$1 billion and 4 percent in volume to 36.33 million

kilograms.

The European Union, led by the Netherlands and the United Kingdom, remains Taiwan’s top export market, soaking up half of its bike production. The United States is its biggest national market, taking another 24 percent of the island nation’s bikes.

The U.S. is much more of a high-end market, with average unit price reaching \$838. For the EU, the average unit price was \$527 — still an increase of 35.5 percent over the 2017 numbers.

Taiwan also expanded its export business to Japan, Australia, China and South Korea, with the latter two countries breaking into the top 10 export markets for the first time.

South Korea came on especially strong: The average unit price for Korea-bound bikes jumped to \$1,105 from \$1,000.

Australia, a welcome counter seasonal market because it sources for the summer peak season in the Southern Hemisphere, also helped drive unit values higher with an average price per bike of \$896. Australia is now Taiwan’s 7th most important bike market in units and 5th in value, taking 59,000 bikes valued at \$53.5 million.

For Taiwan-made e-bikes, the biggest markets were the Netherlands, at 50,000 units; the United States, 37,000 units; Germany, 28,000 units; the United Kingdom, 15,000 units; and Slovenia, which accounted for 11,000 units. ■ DM

Top of the charts		
Taiwan's top 10 export markets by value for complete bicycles, Jan - Sep 2018		
Country	Value (\$ millions)	Pct. Change*
United States	330.9	17.22
Netherlands	174.1	40.41
United Kingdom	80.5	-5.26
Japan	53.8	19.89
Australia	53.5	19.16
Belgium	47.8	-0.85
Canada	41.3	11.79
Germany	36.6	21.39
China	24.6	14.55
South Korea	24.4	6.3
Taiwan's top 10 export markets by volume for complete bicycles, Jan - Sep 2018		
Country	Units (000s)	Pct. Change*
United States	394	6.56
Netherlands	197	11.41
United Kingdom	169	-40.01
Japan	98	9.9
Sweden	88	1.79
Germany	85	-26.59
Australia	59	16.72
Belgium	53	-0.04
Canada	45	-1.14
Poland	39	21.64

\* Compared with comparable period of 2017  
Source: Customs Administration, Ministry of Finance / Taiwan Bicycle Association

## Taipei Cycle Forum 4F/Conference Room 401

Learn about global trends from a range of experts at this year’s Taipei Cycle Forum. Register at the door for NT\$1,000 (\$33; 24 euros) per session. See page 14 for more information about the Taipei Cycle Forum.

### Thursday, November 1

#### SESSION A: E-bike trends and designs

8:30 – 9 a.m.  
Registration

9 – 9:15 a.m.  
Opening Remarks

9:15 – 10:05 a.m.  
Next e-bike design revolution  
Hannes Neupert  
Executive Director, EnergyBus e.V.

10:05 – 10:55 a.m.  
Prepare for an e-bike future  
Hans Goes  
Managing Consultant, Q Square Consultants

10:55 – 11:10  
Break

11:10 – 12 noon  
Panel Discussion  
Mo-Hua Yang  
Vice President, BATSO e.V.

12 noon – 12:10 p.m.  
Feedback collection

SESSION B: The latest on the e-bike anti-dumping case

1:30 – 2 p.m.  
Registration

2 – 2:50 p.m.  
The latest on the e-bike anti-dumping case in Europe  
Jan-Willem van Schaik  
Editor in Chief, Bike Europe

2:50 – 3:40 p.m.  
Adopted e-bike regulations in the U.S.A.  
Edward Benjamin  
Chairman, Light Electric Vehicle Association

3:40 – 4 p.m.  
Coffee break

4 – 4:50 p.m.  
Panel Discussion  
E-bike regulations: What changes? What doesn’t?  
Ben Kao  
General Counsel and Chief Legal Officer, Giant Bicycle

4:50 – 5 p.m.  
Collection of feedback

### Friday, November 2

#### SESSION C: Smart Manufacturing

8:30 – 9 a.m.  
Registration

9 – 9:50 a.m.  
Smart manufacturing will positively impact your current profits  
Daniel Li,  
Principal Solution Specialist, Azure IoT APAC region, Microsoft

9:50 – 10:40 a.m.  
How we will work in 2028  
Matt Tsai  
Head of Robotics and Motion Division, ABB Ltd.

10:40 – 11 a.m.  
Coffee Break

11 – 12 noon  
Panel Discussion: The future of manufacturing applications and trends  
Francois Liang  
General Manager, Cycling and Health Tech. Industry R&D Center

12 noon – 12:10  
Collection of feedback

#### SESSION D: E-mobility

1 – 1:30 p.m.  
Registration

1:30 – 2:20 p.m.  
Cycling science in e-bike evolution  
Scott Chen  
COO, Hybrid Power Bike Division, Giant Group

2:20 – 3:10 p.m.  
The importance of a strong advocacy in the development of e-mobility  
Manuel Marsilio  
General Manager, CONEBI

3:10 – 4 p.m.  
The role of the e-bike in future mobility  
Kevin Mayne  
Development Director, European Cyclists’ Federation

4 – 4:15 p.m.  
Coffee Break

4:15 – 5:10 p.m.  
Panel Discussion: Where are you, and what’s next?  
Ya-Wen Chen  
Advanced Public Transportation Research Center, NTU

5:20 – 5:20 p.m.  
Feedback collection

## New Product Launches

Thursday, Nov. 1  
4F/M Lobby

11 – 11:15 a.m.  
Whiifly  
Whiilight dynamo

11:20 – 11:35 a.m.  
Ming Suey Precision Ind.  
Gapless hub; oversized pulley wheel cage; crank and oval-duo chainring

11:40 – 11:55 a.m.  
Solink International Mfg.  
Aeroe bike pack system

1 – 1:15 p.m.  
Shuz Tung Machinery Industrial  
3D laser cutting technology and application

1:20 – 1:35 p.m.  
Taya Chain  
Taya e-bike chain

1:40 – 1:55 p.m.  
TSLG  
Self-locking technique

2 – 2:15 p.m.  
Taiwan Hodaka Industrial  
The core of FTX pedelec system

2:20 – 2:35 p.m.  
Liyang Global  
Suspension forks

2:40 – 2:55 p.m.  
Sport Mania International  
E-bike

3:20 – 3:35 p.m.  
Sunrising Eco-Friendly Tech Co.  
X-bat, pulley kits

5:40 – 5:55 p.m.  
Kuo & Yang Industrial  
Sport sunglasses



# eBike

## CHAIN & SPROCKET

- Maximum Durability
- High Efficiency
- Low Maintenance
- No Rust
- Easy Upgrade

10,000km+

powered by KMC

e101 EPT Chain +  
Wide KMC Chain  
Rings and Sprockets

3,500km+

powered by KMC

e1 Chain +  
Narrow KMC Sprocket

Compatible with



**BOSCH**

e-Bike systems\*



\*) The drive train must be cleaned and lubricated from time to time. We recommend professional service at your dealer every 2000 Km.



2015-2009  
German iF Design Award



reddot design award  
winner 2014, 2013, 2011



Taiwan  
Excellence  
2018-2015, 2010

KMC (KUEI MENG) International Inc.  
[www.kmcchain.com](http://www.kmcchain.com)

KMC Chain

KMC Chain Europe B.V.  
[www.kmcchain.eu](http://www.kmcchain.eu)

KMC Chain Europe B.V.

KMC Chain American Co.  
[www.kmcchain.us](http://www.kmcchain.us)

KMC Bicycle Chain

# Photos from the show



Custom e-bike by MID at the Craftsman booth



Giant's Bonnie Tu with the Liv women's e-MTB



## French university student wins IBDC competition

French university student Jérôme Boissière (holding the flowers in the group photo) walked away with NT\$350,000 (8,400 euros; \$11,560) yesterday when he was declared the winner of this year's Gold Award in the International Bicycle Design Competition. His winning concept, the Varsko autonomous lighting system (shown front and center with other winners), improves safety where a cycle path intersects with a road.

The free-standing light consists of a pair of solar-charged LED lighting pillars that sit on either side of the road. When a cyclist approaches, a pool of white light alerts the cyclists to the upcoming intersection. The Varsko throws a green band of light across the road to illuminate the way, while flashing its lights for 10 seconds to warn

approaching motorists of the cyclist's presence.

"I'm French and it's my first time in Taiwan — it's so great!" said Boissière, who attends college in Nantes.



Jones Ho shows off new custom frame color order system at the Ideal Bike booth. Consumers can order any combination of colours for their frame.

## Scenes from the Velo party





*We Embrace Innovation  
and  
Keep Moving Forward.*



## ERDP6.0CA-S 275+ / E-FULLY ALL MOUNTAIN

The ERDP 6.0CA-S 275+ Fully is design for conquering extreme terrain. The slim, muscular look is reminiscent of an off-road motor-cycle. The **carbon fiber chassis** is manufactured utilizing EPS technology and High Modulus Carbon Fiber. EPS Tech is a unique forming technology which provides superior strength and extreme lightweight. Combined with a #6061 Aluminum rear triangle the complete frame is lightweight, stiff and responsive.

The heart of the frame is the power drive, a **SHIMANO E-8000** motor with new in-tube battery.

### FEATURES :



\* For more details, please contact our representatives.

### ALTERNATIVE OPTIONS IN ALUMINUM VERSION AND SYSTEM :

#### Aluminum Frame with BOSCH



**Drive Unit :**  
BOSCH Gen 2  
**Battery :**  
BOSCH PowerTube 500

#### Aluminum Frame with SHIMANO



**Drive Unit :**  
SHIMANO E8000 / E7000  
**Battery :**  
DARFON E4C0C



# COMPIT

## The smart command centre



TAIPEI  
CYCLE

L1217// TAIPEI NANGANG  
EXHIBITION CENTER (4F)

SKS-GERMANY.COM



10 Taipei Show Daily

LIVE FROM THE SHOW

# Are trade tensions a typhoon or a shower?

There's a lot of sound and fury about rising trade tensions between the United States and European Union with China — but so far it is signifying nothing much.

Several manufacturers said Wednesday that they've experienced only limited impacts from the "trade war," ranging from mild angst to slightly thinner margins. But they're keeping a wary eye on developments.

Hollis Dong, vice general manager of China-based **Jinhua Star 5F/F0116**, an alloy rim maker, is apprehensive enough that he's watching next week's mid-term elections in the United States to help settle on a business strategy.

Although U.S. President Donald Trump is not on the ballot, the elections will determine whether Trump's Republican party, or its Democratic opponents, control one or both houses of Congress.

Republicans currently control both chambers, known as the House and the Senate. If the Democratic party manages to win a majority in one or both chambers, it will be able to block or delay some of Trump's attempts to impose tariffs on China.

Trump himself will not face voters until 2020, when he is expected to run for a second four-year term.

"We are looking to the results of the upcoming mid-term elections in the U.S.," Dong said Wednesday. "If Trump suffers a setback, then in two or three years things should be fine. These two or three years will be hard, but we've just got to hold on and tough it out."

Because Jinhua is a components maker, it hasn't been directly affected by the trade policies. But, Dong added, "the flow-on effect from the complete bicycle makers whom we supply means we are expecting an impact."

To counter trade pressures from the European Union, Jinhua Star has established a factory in Poland. Dong said it is intended not just to boost Jinhua Star's "speed-to-market" in Europe, but is also an anti-dumping mitigation strategy.

In September, the Trump administration imposed a 10 percent tariff on most U.S.-bound bicycle products made in China, and said it would boost the tariff to 25 percent beginning in January.

But the U.S. hit e-bike products particularly hard, imposing a 25 percent tariff on e-bikes and a 29 percent penalty on e-bike motors, up from zero and 4 percent, respectively.

European Union officials, meanwhile, are also debating the imposition of stiff anti-dumping duties on Chinese-made e-bikes.

A full-fledged trade war could also force Jinhua to drop its prices, or move production to Taiwan

or elsewhere in Southeast Asia.

That's the kind of strategy that more companies may take, should this threatened trade war turn out to be more than election year rhetoric.

Axman general manager Jacky Huang, like many Taiwan-based suppliers who talked with the *Taipei Show Daily* yesterday, is sanguine about the situation.

"At the moment I haven't seen any big effect. It's just talk — whether and how to move out of China," Huang said.

Axman does not have a factory in China but manufactures solely from its plant in Changhua County, Taiwan.

At **First Components 1F/10329** general manager Johnson Li said it's the uncertainty, not the reality, that is having some effect on his company's business.

"Customers are uncertain about what is actually going to happen, so they are holding off on orders," Li said. "Everything has happened so quickly, so they are thinking about whether to buy from Taiwan or Eastern Europe."

Jerry Kao, general manager of **Seaout Wear, 4F/N0020** is particularly upbeat. His Taichung company

manufactures apparel under the Ohio Sport brand name.

"We hear a lot of other companies complaining about a drop in business. But we are seeing an increase," Kao said Wednesday. "We are starting to get a lot of inquiries that we didn't get before. Before the trade war issue we were experiencing strong price competition. But now, because Taiwan quality is better and with the expectation of higher costs in China, our business is really looking up."

(See page 4 for extended comments from some of these suppliers about the trade tensions.) ■ GR/SD



Jerry Kao of Seaout Wear

# Reverse Components tells kids to get a grip

When it comes to the contact points between rider and bicycle, saying the fit is “about right” is just plain wrong. So Reverse Components has expanded its range of sized grips and pedals with products for the youngest mountain bike enthusiasts.



Young Star pedals and grips for young rippers, from Reverse Components

Based in the heart of Germany's Black Forest, **Reverse Components 4F/M0413a** is a rider-owned company that is exhibiting at Taipei Cycle for the first time. You can find them at the CONEBI pavilion.

Its flagship products are handlebars, stems, grips and pedals. Because one size does not fit all, Reverse Components

launched its lock-on grips in sizes beginning in 2014, in diameters from 28 to 34mm and with different patterns for riders to choose from. In 2016, Reverse added the Seismic line of grips to its catalog, featuring soft silicone material with more damping.

But there still was an empty space in their product line, sales manager Steffen Herbst said yesterday.

“The managers of the company have children, and they ride bikes with them. Soon enough they found it hard to find pedals and grips that fitted their specific needs,” he said.

This is how the Young Star series came to life. The aluminum pedals, first shown at Eurobike, come with optional pins and a shorter axle for a lower Q-factor and better pedaling efficiency.

In Taipei, Reverse Components is debuting its new Young Star grips to accompany its pedals. Made to fit the hands of the youngest mountain bike enthusiasts, these grips are 100mm wide and have a diameter of 28mm. They come with a lock-on collar on one end and a dual compound rubber end-section on the other for added comfort, safety and durability. ■ LVR

# Miga Safety seeks to put Israel on the map

Despite a vibrant start-up culture, Israel has not managed to put itself on the bicycle industry's map. Miga Safety hopes to change that with a comprehensive selection of helmets.

While **Miga Safety 4F/M1407** shares a tiny booth with its compatriots Seatylock, it focuses on protecting the riders' heads instead of their bikes.

Miga is exhibiting in Taipei for the first time anywhere — no surprise considering the company was only founded in June.

While the company has a brief history in the industry, the people behind have been around for awhile. Gahl Cohn, Miga's international sales director, is a former mountain bike racer who picked up an education in helmets and apparel during a career spanning a decade.

To found Miga, Cohn teamed up with industrial designer Amit Shita, the company's director of design and development. Shita was immersed in cycling culture during an industry gig in Flanders.

Miga relies on the expertise of its manufacturing partner near Shenzhen, China for production. The Miga lineup covers pretty much all cyclists' needs, from toddlers to e-bike pilots to ambitious athletes.

Miga is showing a prototype of a hands-free Bluetooth

speaker, made with a 3D printer, that can attach to the visor or the shell with Velcro.

Most of the helmets in the Miga line use microshell constructions with EPS foam linings. The company offers a series of more robust models made of sturdy ABS plastic that are intended for utility cyclists and e-bike owners.

One interesting twist is that Miga does not shield its know-how from industry rivals. Instead, the Miga founders are willing to act as consultants to OE customers, including sharing their design expertise and access to its Chinese production partner. ■ LVR



Amit Shita (left) and Gahl Cohn founded Miga Safety in June and are making their trade show debut in Taipei.

TAIPEI CYCLE K0610 Booth  
Oct. 31 / Nov. 3, 2018

• HIGH TORQUE RESISTANCE  
• Fit in 1000W/160Nm Motor

eONZE 11S  
eDECA 10S  
eNOVE 9S  
eOCTO-DH 8S/IGH

**DHT**  
DHT:  
25% STRONGER  
MAX. DURABILITY  
SELF-LUBRICANT

**GST**  
GST:  
ECO FRIENDLY  
MEET ROHS/REACH  
25 YEARS RUST-PROOF

**TAYACHAIN**  
www.tayachain.com

## Overview: e-MTB wheels and hubs

# Hoop dreams: Wheel and hub suppliers fortify their products for brawny e-MTBs

Sales of electric mountain bikes are booming, especially in Europe. And that's been welcome news for manufacturers of wheels, rims and hubs, which are fortifying their components to handle the extra loads generated by the weight and torque of electric assist systems.

The earliest e-MTBs were clunky affairs, often taken beyond their structural limits when ridden off-road at speed. E-MTBs are not only much heavier than their conventional counterparts, but are ridden more often and for longer distances. Invariably, this heavier usage places more demands on the bike's moving parts. The higher loads generated by popular mid-drive motor systems place particular stress on wheels and hubs.

Early e-MTB adopters experienced these issues firsthand. It was not uncommon for their rear hubs to fail because the freehub mechanisms couldn't withstand the high loads.

This has created a demand for rugged e-MTB wheels that won't fail on the trail, and for freewheel mechanisms that reliably transfer the rider's and the motor's power to the rear wheel.

Series wheelsets consists of a high-end model with carbon rims, a mid-level version with alloy rims and two more affordable models. These wheels have seen considerable success on the OE market, and can be found on 2018 bikes from several top brands. Expect to see even more in 2019.

**Sun Ringle 4F/M1028** produces wheels on a smaller scale than DT Swiss, but is quickly expanding its catalog of burly e-MTB offerings. For 2019, Sun Ringle is launching three wheels.

The Düroc SD37 uses welded, tubeless-ready aluminum rims with external and internal widths of 37mm and 34mm, respectively.

They are laced up with 32 double-butt, straight-pull spokes for durability under heavy loads. The SD37s are available in 27.5- and 29-inch sizes.

For e-MTBs with plus-sized wheels, Sun Ringle offers an even sturdier option, the Düroc SD42, available only in a 27.5-inch version. The rim has external and internal widths of 42mm and 39mm, respectively.

All three wheels use precision-ground steel axles and Sun Ringle's SRX straight-pull hubs with high-strength, dual-tooth pawls.

DT Swiss and Sun Ringle can't satisfy the demands of the entire industry, of course, so the booming e-MTB segment has left plenty of room for other players.

One is **Spank Industries, 4F/L1002** which this year is rolling out two new e-MTB wheels that are based around its proven 30-tooth engagement freehub mechanism, housed in Boost-sized hubs.

Spank then adds an unusual twist — it fills the hollow chamber of the alloy rims with Vibrocore



Spank Oozy 395 Hybrid wheelset

foam, which it originally introduced in mountain bike handlebars. Although the foam adds a bit of weight, it absorbs high-frequency vibrations, which Spank says can reduce fatigue and smooth out the ride.

36mm internal width.

An asymmetrical rim profile allows for increased spoke tension. Front and rear wheels use 32 double-butt spokes with brass nipples, laced in a three-cross pattern.



DT Swiss HX 1501 Spline One

**DT Swiss 4F/M0702** was the industry's first big player to target e-MTBs, thanks to a personal commitment by senior vice president Daniel Berger.

The Swiss wheel specialist already had a reliable freehub mechanism — the star ratchet system — that could handle the extra torque dished out by mid-drive motors.

So engineers worked on reinforcing the axle and bearing dimensions of DT Swiss' existing upper-range hubs.

They then laced these reinforced hubs to sturdy rims, using 28 of DT's strongest spokes with oversized heads in a three-cross pattern.

DT Swiss' current line of Hybrid



Sun Ringle Düroc SD42



Reynolds TRE carbon wheels

Steel axles and a steel freehub body add extra durability, and 32 triple-butt j-bend spokes, laced in a three-cross pattern, keep everything true and straight.

The Oozy 345 Hybrid wheels, featuring aluminum rims with an internal width of 30mm, are available as 27.5- and 29-inch sizes.

The internal rim width of the plus-size Oozy 395+ Hybrid wheel is 35mm.

Size-wise, **Reynolds 4F/L0928** is following a similar path with its carbon-rimmed TRE wheels for weight-conscious customers.

The 27.5- and 29-inch versions sport a 30mm internal width, and a plus-size 27.5-inch wheel has a

To cope with the additional forces dished out by a mid-drive motor, Reynolds relies on short steel pawls and a reinforced ratchet ring area, creating a durable and reliable freehub mechanism with 36 points of engagement.

For even more durability, the Boost-size axle and freehub body are made of chromoly steel.

The rear hub runs on five sealed bearings — three in the freehub alone. Small cooling fins at the beefed-up IS 6 disc mounts help dissipate heat — another side effect of a heavy e-MTB, which requires more powerful brakes.

Taiwan wheel specialist **Novatec 1F/I0711** debuted e-MTB hubs at Eurobike, and is now bringing a complete wheelset to market — the E-MTB Diablo XL. The



Novatec Diablo XL 29

rear hub.

Built for even heavier use is the D932SB-B12 rear hub, with four bearings instead of two to support the axle, and with a 12-pawl freewheel mechanism.

Under its Bear Pawls brand, Alex Rims **1F/1117** is showing an assortment of e-MTB hubs and rims that join its recently released BEB-004 rear hub. For durability, and reliable engagement under higher loads, Alex reinforced the freehub system with six strengthened dual-tooth pawls, each with its own spring. A steel axle also adds stiffness, and angled flanges facilitate the replacement of single spokes.

Diablo XL combines Novatec's reinforced hubs with alloy rims that have welded rim joints, an asymmetrical profile, and a 30mm internal width. The wheels are tubeless-ready out of the box and come in 27.5- and 29-inch versions.

Its e-MTB hubs, including the D791SB-B15 front hub and the D162-SB-SL-B12 rear hub, accept 32 14-gauge j-bend spokes. Versions are available for either the six-bolt IS disc mounting standard or the Shimano Center Lock system.

For the rear hub, Novatec reinforced the freewheel mechanism, relying on three pawls and 33 teeth for reliable and instant engagement — even when a mid-drive motor is adding up to 70Nm of torque. The Boost-size steel rear axle and stiffer hub shell further fortify the



Glory Wheel Z21 rear hub

Taiwan's **Glory Wheel Enterprise 4F/N0820** is getting into the e-MTB segment with two hubs — the burly, premium Z2 series and the value-oriented Z1 series for the OE market.

Both feature reinforced shells with cooling fins at the disc brake mounts for optimal heat dissipation.

The biggest difference between the Z2 and Z1 is the freehub mechanism. The Z2 series combines a 36-tooth chromoly ratchet ring with a simultaneous 6-pawl engagement, while the Z1 series incorporates a more basic 24-tooth chromoly ratchet ring.

Other features are common to both series. For stiffness and longevity, the cassette body runs on three bearings and the steel through-axles run on two bearings.

Front hubs are available with 110mm

Boost spacing. Glory Wheel makes rear hubs in Boost, downhill or Super Boost versions, with axle widths of 148mm, 150mm and 157mm, respectively.

Both series are built with flanges for J-bend spokes, and with 28, 32 or 36 spoke holes. Thanks to the modular design of the hubs and the use of end caps to fit different frames and forks, Glory Wheel reduces the number of spare parts.

While French rim maker **Mach1 4F/M1331a** has not developed rims specifically for e-MTBs, it markets some of its existing rims as "electric-ready."

These typically are sturdy rims for all-mountain and enduro riders, including the new Trucky 40 model with an internal 40mm width, and the existing Trucky 30 and Maxx rims with slightly narrower profiles.

"Many e-mountain bike riders are a little less experienced, so they tend to pick more direct lines and plough through stuff rather than opting for the cleaner lines," said François Joly, Mach1's sales and marketing manager.

He added, "Apart from the higher weights, the longer distances and the higher speeds that typically occur on e-MTBs, this is another reason why particularly stiff and strong rims are needed for this application."

The e-MTB wheel party is just getting started: Suppliers including Syntace and Reverse Components say they expect to show e-MTB wheel and hub products at the next Taipei Cycle Show in March.

■ Lvr



Alex Rims Bear Pawls BEB-004 rear hub

**NEXO**  
NEW TECH AIRLESS TIRE

**RIDE  
UNIQUE**  
E-BIKE READY

Booth.  
**K0202  
N0902**  
www.nexotire.com

**PUNCTURE PROOF**  
Burst-proof  
Inflation-free

**SAFE**  
Exclusive  
patented  
safety device

**DURATION**  
Over 5,000 KM

# Taipei Cycle Forum expands to 2 days

There's a lot going on in the bike industry, which is why Taipei Cycle has expanded its annual forum to two full days, up from a single day in previous years.



Scott Chen, Giant Group

The forum kicks off this morning in Conference Room 401, on the 4th floor of Nangang, with an international panel of guest speakers.

If you didn't pre-register before the show, you can pay at the door. The fee is NT\$1,000 (24 euros; \$33) per session. The Forum is broken up into morning and afternoon sessions for a total of four sessions over the two days.

"We didn't think one day was enough," said Jasmine Wu, publicity director for Taipei Cycle. "From our experience with the March forum, we know that a lot of Taiwanese manufacturers are very interested in the topic of e-bikes. So we are focusing a lot on e-bikes this year."

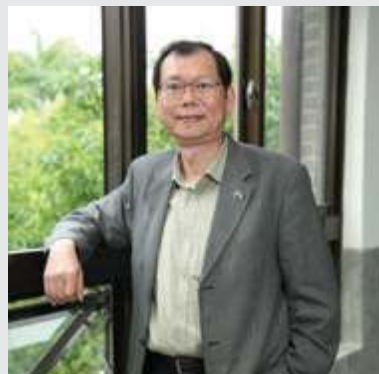
The forum is broken up into four sessions, one in the morning and one

in the afternoon of each day. While most sessions involve aspects of e-bikes, there's also a session on the increasing use of robotics and other kinds of "smart" manufacturing, which are transforming the way factories make products.

Today's forum kicks off with a session on trends in e-bike design, featuring three respected industry veterans: Hannes Neupert, founder of ExtraEnergy and EnergyBus; Han Goes of Q Square Consultants, who for more



Francois Liang, Cycling and Health Tech. Industry R&D Center



Jason Chang, Advanced Public Transport Research Center

than 15 years has been a consultant for product and business development of the global two-wheeler industry with an emphasis on e-bikes; and Mo-Hua Yang, the president of TD HiTech Energy and a longtime expert in the development of lithium-ion batteries for electric vehicles.

This afternoon's schedule switches from concepts to some of the on-the-ground issues facing e-bike manufacturers and distributors. Jan-Willem van Schaik, editor in chief of Bike Europe, will discuss the status of the European Union's anti-dumping duties on Chinese-made bikes and e-bikes. Ed Benjamin, who has spent more than two decades in the e-bike business, will update the group on

the status of U.S. regulations affecting e-bikes; and Ben Kao, general counsel for Giant Bicycle, will lead a panel discussion on e-bike regulations — what's changing and what isn't.

As robotics and other types of "smart" manufacturing transform factories, speakers will take a deeper drive into this issue Friday morning. And on Friday afternoon, the Taipei Cycle Forum wraps up with a full session on e-mobility, with talks by Scott Chen, COO of the Giant Group's Hybrid Power Business; Manual Marsilio, general manager of CONEBI; Kevin Mayne, development director of the European Cyclists' Federation; and a panel discussion led by Jason Chang, director of the Advanced Public Transport Research Center at National Taiwan University.

See page 4 for a detailed schedule.

■ DM



Han Goes, Q Square Consultants

BOOTH: N0325

Airace iGauge



**AIRACE**  
AIRACE-CYCLING.COM

The world's first Bluetooth Pump



iGauge  
iWINDPRO V2 RD  
AP-45BT



iGauge  
iWINDPRO V1RD  
AP-46BT



iGauge  
iWINDPRO V1MTB  
AP-48BT



iGauge WINDPRO A  
AP-14BT



iGauge  
iSPEED F2 G  
AM-93BT

Apple & Google device  
compatible via Bluetooth



## Overview: Disc brakes

# With e-MTBs delivering more 'go,' cyclists need brakes with more 'stop'

Disc brakes — arguably one of the great advances in cycling — deserve a lot of credit for extending the limits of what's possible, especially in mountain biking. Wet, muddy, sandy, or steep no longer pose the threats they once did to riding fast and hard off-road.

Now, heavy and powerful electric mountain bikes are creating more demand for better brakes. Even road cycling's sluggish acceptance of disc brakes is boosting the number of disc brake users, who are driving suppliers to innovate.

Tektro **1F/10112** introduces a new hydraulic disc brake system for e-MTBs. Engineers paid particular attention to the bike's weight, which is a defining characteristic of e-MTBs.

For riders, weight is less of an issue because the motor bears the additional burden of powering the bike. But it's a big deal for brakes, because heat builds up in an e-MTB rotor more rapidly than it does on a slower, lighter bike.

Tektro expanded the rotor's thickness to 2.3mm, thereby lowering heat buildup by 8 percent and reducing rotor deformation by 15 percent.

The caliper, designed specifically for the 2.3mm rotors, uses a smart open-top design for easy pad replacement. The caliper also features hybrid pistons for the ideal blend of lightweight heat management and smooth, reliable actuation.

In the pursuit of better heat management, **Zeno Bicycle Component**



Zeno Reaction Floating Rotor

**Co. 4F/10012** has designed its new Reaction Floating Rotor with an off-center, leaf spring-style bolt pattern to connect the aluminum spider to its steel disc for optimal heat dissipation.

Zeno says the design transfers braking force directly to the bike while reducing deformation at the bolt junction. The advanced design allows for both a greater braking surface than traditional rotors, and prevents structural damage due to heat buildup. The Reaction Floating Rotor is available in 140, 160, 180, and 203mm sizes.



Zeno SpeedLink hydraulic connector

Another creative solution from Zeno is its universal SpeedLink hydraulic connector system. The system uses a reusable, olive-free compression nut that's compatible with standard hydraulic brake hoses. By eliminating the olive, SpeedLink installs faster and the brake hose is easier to route — welcome improvements for shop mechanics as well as skilled do-it-yourselfers. The SpeedLink also saves money because there are fewer parts, and no special tools are needed for installation.

When the trail points downward, braking ability becomes critical to staying upright, especially when the descent takes riders over terrain that's anything but reliable.

For gravity and enduro riders, four-piston brake calipers provide the stopping power for a sharp turn when



Tektro e-MTB hydraulic disc brake system

the trail takes a surprise detour.

Juin Tech (GG Co.) **1F/K0028** unveils two new four-piston brake systems in both post- and flat-mount versions to Taipei Cycle. The GT-P and the GT-F Hybrid hydraulic 4-Piston Disc Brakes both are made from forged and CNC-machined aluminum. Specially coated pistons enhance braking performance.

Juin's brakes use non-corrosive, highly stable mineral oil to transmit braking force to the calipers, which can be adjusted to optimize the life of both the rotor and brake pads.

Each version comes with a black, red, blue, or green finish and is compatible with short-pull or standard-length brake levers. At 133g, only two grams separate

the post-mount model from the 135g flat-mount version.



Clarks Clout 1 hydraulic brake system

For new e-MTB riders, **Clarks 4F/10523** offers the Clout 1 hydraulic brake system, which is the latest addition to its line of two-piston hydraulic brakes.

Derived from Clarks's hugely successful M series range of brakes, the Clout 1 possesses the characteristics of a much higher-end brake, including greater braking power and a tactile feel at the point of contact with the hands. But the price is designed to be compatible with entry-level bikes.

Like the Juin Tech's brakes, the Clout 1 uses mineral oil to activate braking. The two-piston caliper is intended more for gentler trails that won't impose as many braking demands. The Clout 1 allows users to adjust their lever reach and calipers. The new system weighs 419g. ■ WB



Juin Tech brake calipers

## Specially Made For E-bikes

Offering the long durability, good grip and excellent puncture protection

**E-BIKE 50**  
For fast e-bikes, up to 50 km/h, certified with ECE-R75

**E-BIKE 25**  
For pedelecs, up to 25 km/h

Booth No. 10708

INNOVA RUBBER CO., LTD.

INNOVA-PRO

No. 23, Jingcheng Rd., Changhua 50067, Taiwan  
Tel: 886-4-7521037 Fax: 886-4-7521062  
E-mail: innova@innovatires.com.tw

www.innovatires.com

## Overview: Luggage

# With so many new bags and panniers, it's easy to haul your personal baggage

The stars are aligned for bicycle luggage brands.

A number of trends favorable to bag and pannier makers, many of them based in Taiwan, have converged to make this often-overlooked category one worth watching.

First is the explosion in bikepacking — traveling fast and light across varied terrain — which has opened up a new and exciting segment for luggage brands.

Second is booming interest in the more leisurely pastime of cycle touring. Third is the ever-growing number of bike commuters who need to carry their gear with them.

Finally, the advent of electric assist systems gives cyclists bikes that can carry them farther and easier. They are looking for ways to use their e-bikes for school runs and shopping trips, which means they need bags and panniers that are roomy enough to leave the car at home.



Ibera Waterproof SeatPak Carryall

Ibera **1F/1401** recently entered the bikepacking segment with its 10-liter Waterproof SeatPak Carryall. The strap-on saddle bag is an alternative to a conventional carrier frame and bag.

The SeatPak Carryall weighs 510g (1 pound, 2 ounces) but carries up to 5kg of gear. Constructed of tough, waterproof 210D Nylon and 250D tarpaulin, the SeatPak Carryall keeps cargo dry. A roll-top closure makes adjusting the volume easy, while external cords accommodate carry-along items. Reflective trim adds a touch of safety and style.



Woho frame bag

Since 2015, **Woho Bike** **4F/N0001** has offered complete solutions for bikepackers. Its two newest products comprise a full-frame welded bag and a handlebar drybag harness.

Tweaked for smaller frames, the bags are made for climates from the Arctic to the tropics. The frame bag gets the most capacity out of the front triangle area. A roll-top and a welded structure mean there are no zippers or stitches to fail, but the compartments remain watertight.

The light, simple drybag harness works with both drop and flat handlebars. It fits many bag sizes and

will fit bikes with narrower or lower bars that are often found in Asia. It comes standard with a light, 13-liter dry bag.



Free Parable Design Gorilla Cage

Free Parable Design **4F/N0423a** this year upgraded the material it uses for its Gorilla Cage clip and bag. The new material resists low temperatures, and a VHB adhesive pad from 3M enhances stability in extreme environments.

Free Parable Design says the new Gorilla system was extensively tested, surviving 100,000 cycles during a vibration test. Cyclists can securely mount a Gorilla cage almost anywhere on the bike with a trio of cleats.

With its ready fitting, daisy-chain side straps, the matching bag forms the perfect pairing. Equally usable by itself for touring or adventure cycling, its new denim-like fabric is stylish and urbane.



Shine-Ho Lotus saddle pack

Shine-Ho **1F/10806** comes to the show with two new bags in its Lotus line: a waterproof toptube model with a streamlined shape that cuts wind resistance, and a tough, bikepacking-style saddle pack.

The large-capacity saddle pack makes full use of the space under the saddle. It includes a zipper closure, reflective material around the bag itself, a rear light holder, saddle rail protection, and an extendable layer to make the bag bigger when needed. High-quality materials are water resistant and easy to clean.

The toptube bag sits behind the stem and thus out of the wind. It's robust and has a pleasing tapered shape. And while the toptube bag is compact, it's big enough to store energy bars and other essential accessories, all within the rider's reach.



Evolvo bikepacking system



Emfiss tool bag wrap



Vincita Urbano XL Double Pannier

**Evolvo**, a brand of **Cycle Chris**, **Hall 3/ G0458** keeps cyclists rolling as fast as possible with full systems of bags that often weigh under 1kg — less than the weight of many single panniers.

Evolvo trims weight in its new bikepacking travel bag by eschewing buckles and using only straps for an easy fit.

The complete lineup includes a handlebar bag, a toptube-mounted phone holder, a frame bag with a rainproof strip, and a trail-oriented saddle bag.

The saddle bag, which fits under the saddle with a secure, adjustable, click-to-close mount, is stiff and seals out the wet thanks to its rainproof exterior.

Traditional in its looks but modern in its operation, the Urbano XL Double Pannier from **Vincita** **4F/L1225** is a magnetic quick release bag with copious carrying capacity.

A magnetic base attaches to the carrier top. The bag itself is held in place with Fidlock Snap magnetic fasteners, and can be removed and reattached in seconds.

Made from tough, long-lasting Cordura, the main compartment opens wide and stores a lot of stuff, from groceries, clothes, laptop computers, cycling gear, and tools, to whatever else a cyclist needs to carry.

With great looks and stylish reflective tabs, the Urbano XL is available in muted forest green or charcoal gray.

**Lezyne** **4F/L0416** is best known for its tools, pumps, lights and

computers. Now the brand is entering the bikepacking market with new frame and bar caddies. Both are made of durable, weather-resistant materials.

The frame caddy runs the full length of the toptube to offer substantial 2.5-liter storage space. The straps are friendly to the frame's paintwork and adjust to a variety of frame types.

The bar caddy hauls seven liters. Both are rugged enough for trekking and bikepacking trips, and convenient enough for around-town errands.



Lezyne frame caddy

Also known for its accessories like mudguards and pumps, **SKS** **4F/L1217** this year introduces three new packs: the front-mounted Explorer, and the Traveller and Racer saddle mount bags.

The robust Explorer holds a phone for navigation and is water-repellent. The detachable smartphone pouch has an integrated opening for a headphone cable, so rain simply runs off.

A laminated zipper keeps moisture out of the bag. On cold days, an Easyzip slider makes opening the compartments



SKS Explorer with detachable smartphone pouch



The Qbicle Bike Porter folds up compactly when not carrying a bike.

The Shield's faceted and water-repellent hardshell exterior adds a sci-fi design touch. Inside the pack are multiple organizers, including one for a 13-inch laptop or tablet. And it accepts a "power bank" that can be used to charge devices.

Now in its second iteration, the Ninja Master Cage from Topeak 4F/M0711 keeps a bike looking tidy. It looks like another bottle cage, but underneath the cage is Topeak's QuickClick Mounting System, which accepts the direct attachment of such

accessories as multitools, a flat repair kit or CO2 cartridges.

Attachments snap easily in place, and release with a simple push. Each component is available separately or as part of a kit so riders can choose the accessories they need.

possible with gloves on.

The bags close with Velcro or click-fastening systems. For nighttime safety, rear-mounting models include reflective elements and materials, and have attachment tabs for extra lights.

Just as important as transporting your tools on the bike is looking after them when they're traveling with you. The Emfiss Hall 3/G0551 tool bag wrap is great for storing and organizing an expansive assortment of tools and accessories. It will accept large items like chain whips and pumps, and ensures all of your tools are close at hand when needed. Roll it up and toss it into a bike bag or a backpack. With traditional materials and a simple, roll-together closure, the Emfiss tool bag wrap has a timeless design.

Sometimes, a cyclist's cargo is the bike itself. The Bike Porter bike box from Qbicle 1F/K1401 folds flat for easy storage. It comes in three sizes, each of which folds compactly enough to stash beneath a hotel bed.

Once assembled, however, it becomes a solid and durable bike carrier, thanks to robust materials and four integral bindings. A detachable wheeled carrier with four pivoting castors is included with the Bike Porter, to help carry the bike through a

Noted rack manufacturer Massload 1F/I1301 has teamed up with Dutch bag maker Basil to launch the MIK system, short for "Mounting Is Key." The MIK system attaches quickly to the rack and is compatible with many Basil bags and baskets.

The mount allows cyclists to lock bags and baskets in place with a unique folding key. An audible click provides feedback so cyclists know the bag has been securely mounted.

MIK products come with a pre-mounted plate, making them an easy sale to cyclists. Massload also offers an MIK carrier plate adaptor, so users can convert an existing rack to work with the system. ■ JD



Topeak Ninja Master Cage



Huitong Shield Bluetooth Speaker Backpack

large airport terminal.

The smallest size weighs 2.3kg, so the Bike Porter won't add a lot to the bike's weight. That makes it easy to maneuver, and helps cyclists stay below the airline's weight limits.

The sound of silence is anathema for some cyclists, who never want to be separated from their favorite tunes. The Shield Bluetooth Speaker Backpack from Huitong Hall 3/G0248 comes with its own speaker so users can get the party started wherever they are. The Bluetooth speaker will play for up to 24 continuous hours.



MIK mounting system from Massload and Basil

# ALEXRIMS

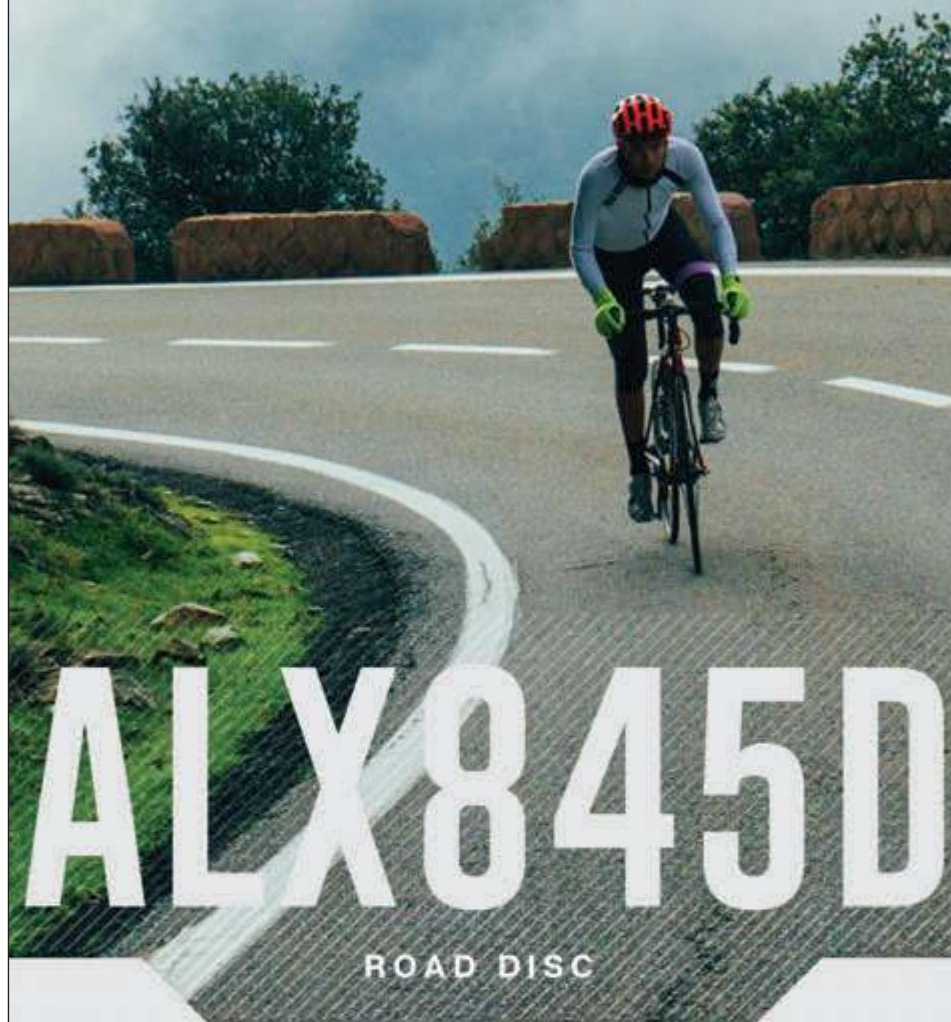
FOR THE WAY YOU RIDE

WWW.ALEXRIMS.COM

+ FULL CARBON

+ LOW WEIGHT

+ STRAIGHT-LINE, AERO PERFORMANCE



TAIPEI BOOTH NO: J1117

## Overview: Production machinery

# It takes dozens of complex machines to turn raw metal into a finished bike

Bicycles don't make themselves. Even a skilled frame builder can't craft all of the components that go into a finished bike. Every tube, every spoke, every bolt or bearing — in short, every component, from a hydroformed aluminum downtube to a simple plastic spacer to the decal with the brand's logo — first has to be manufactured before it can be assembled into a bicycle.

Most trade show visitors are interested only in the finished product. But Taipei Cycle this year is highlighting many of the companies that build the specialized, often complex production machines that are the behind-the-scenes workhorses of a bicycle factory.

Show officials say they hope to build on this segment in future shows, including an increased emphasis on what they call "smart machinery."

Ethan Liu, a Taipei Cycle show manager, said many of the machinery exhibitors come from the automotive industry.

"We do see an increasing interest that they've put into the cycling industry, yet the scale of their participation is not yet big enough to be a new category," Liu said. "What the cycling industry benefits the most from now is having a better way of monitoring and controlling the production line. The data they collect could help optimize their productivity."

**Shuz Tung Machinery, Hall 4F/N0407** which celebrates its 40th anniversary this year, is all about the tubes. It supplies many of the machines that bend, cut, chamfer, swage, thread, polish, and perform all of the other processing steps needed to turn aluminum into a bicycle. If you need a 55,000kg (60-ton), two-story-tall hydroforming machine to turn a raw aluminum tube into a shapely downtube for an electric bike, Shuz Tung's got you covered.

The bicycle industry currently

accounts for about 60 percent of Shuz Tung's sales, although it also supplies equipment to Taiwan's big furniture industry. Under its Wise Pioneer brand, Shuz Tung also manufactures electronic equipment.

At Taipei Cycle, Shuz Tung is presenting a 3D laser cutting machine for aluminum, and an automatic welding machine for aluminum frames. The laser cutter automatically cuts holes of different shapes and sizes, and creates other complex shapes, out of tubing that's already been bent and hydroformed.

The laser cutter is especially useful for e-bike frames, which can be complex because of the need to create precisely-shaped cutouts for batteries and other components.

Shuz Tung sells its machinery to customers around the world, including several European countries, Russia, Vietnam, Indonesia, Brazil and India.

Over the years, Shuz Tung has received several awards for technical innovation from Taiwan's Ministry of Economic Affairs.

If you need to put labels on a lot of library books, you might turn to a product made by **CENZ Automation, Hall 3/G0648**. Ditto if you need to calibrate a bicycle frame.

CENZ specializes in robots and other intelligent automation systems, which it sells to customers worldwide.

The company's new automatic bicycle frame calibration system, which



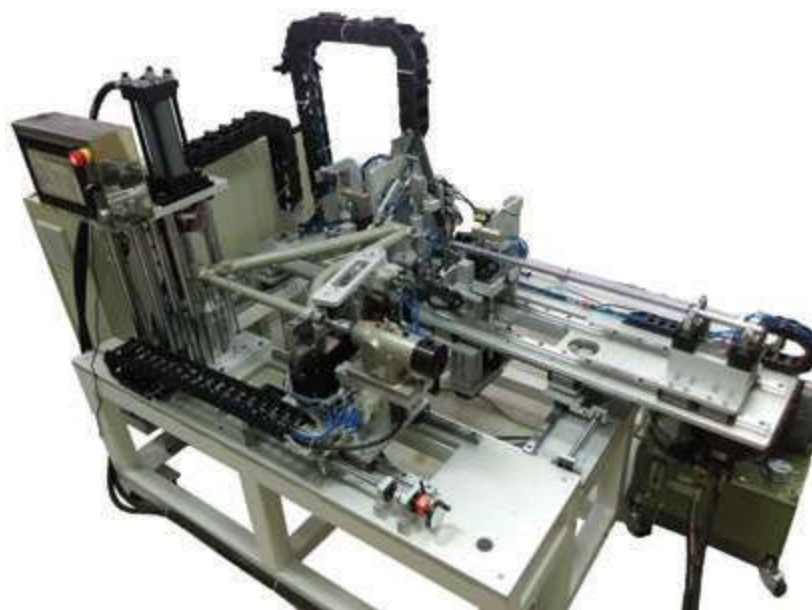
3D Mart distributes 3D printers from such manufacturers as Ultimaker and other global suppliers.

is still a prototype, is intended to help framemakers improve their production process.

The system measures frame misalignments that are a byproduct of the welding process. It can detect

Sunrise and MJ Cycle. While Yao Sheng sells mostly in Taiwan, some of its equipment is in use in Vietnam and other locations.

At Taipei Cycle, Yao Sheng is highlighting its double shaft hanging



CENZ frame calibration machine

misalignments on the horizontal and vertical axes and automatically recalibrate the frame to match its intended specifications.

CENZ says the system is flexible enough to fit a variety of frame sizes. It will be promoting the machine at its Taipei Cycle booth, although the machine itself is too large to have on-site.

CENZ has been a partner of the National Taiwan University of Science and Technology — better known as Taiwan Tech — since its founding.

**Yao Sheng Machinery, Hall 3/G0647** specializes in shot blasting machines, which are a fixture in almost any industry that uses metal. Shot blasting cleans, polishes and strengthens metals.

Taiwan bicycle manufacturers are a key part of Yao Sheng's business, and the company supplies equipment to such industry stalwarts as A&J Worldwide,

type continuous shot blasting machine (YSM 507/YSM509) and hanger type shot blasting machine (YSM810A/YSM810B).

Established in 1976, Yao Sheng has been ISO9001 certified since 2013.

Bike producers don't have to just make the components, but they have to test them to make sure they perform as intended.

**Samwell Testing, Hall 3/G0446** is a Taiwanese company that produces ultraprecision measurement instruments for PMI, or "positive material identification," analysis. One such device is an XRF (X-ray fluorescence) analyzer, which can analyze the composition of metal alloys.

At Taipei Cycle, Samwell is displaying its newest handheld XRF analyzer, the Niton XL5, which it manufactures for Thermo Scientific. An operator simply aims the handheld XL5 at a piece of



Julian Chuang is general manager of Shuz Tung, which supplies dozens of types of factory equipment specifically made for bicycle manufacturers.



Yao Sheng hanger type shot blasting machine

tubing or a metal component and pulls the trigger.

In seconds, the analyzer will display the chemical composition of the alloy. The company says the XL5 works with almost any type of metal alloy, including stainless steels, titanium, cro-mo and others.

That lets factory workers ensure the piece they are testing is properly made. Using the wrong alloy can lead to premature corrosion or failure.

Outside of the bike industry, other applications include detecting heavy metals in the soil, or lead in consumer goods.

Samwell has worked closely with the Industrial Technology Research Institute (ITRI) since its beginning, and considers itself a pioneer in the move to promote Made-in-Taiwan quality.

A new bike isn't finished until the brand's name is applied to the frame. That often involves the use of a special kind of durable label. And it takes a



Niton XL5 handheld XRF analyzer, made by Samwell Testing

special machine, like the ones made by **Hansheng Precision Machinery, Hall 3/ G0642** to apply those labels.

At Taipei Cycle, Hansheng is displaying its new HS-E05D Double Suction Type Automatic Labeling Machine. The labeling machine is for front forks, and Hansheng says it's the first of its type on the market.

Hansheng is also exhibiting its standard model HS-213 Tabletop Round Bottle Labelling Machine, which officials say is an easy-to-use, robust and long-lasting labeler that is best suited for smaller production runs.

Because Hansheng sells mostly to companies in Taiwan or Southeast Asia, officials expect to meet with several international customers at the show.

Ever since its invention in 1984, 3D printing has become an important technology that allows manufacturers to quickly prototype parts, or even produce complicated structures that cannot be made in another way.

**3D Mart Hall 3/G0358a** of Taiwan

distributes 3D printers from a number of global suppliers in this fast-growing industry. The company says bikemakers are increasingly turning to 3D printing to produce prototypes of components so they can quickly determine whether a particular design shows promise or should be abandoned.

3D Mart offers its own printing service for companies, and sells printers from global suppliers.

At Taipei Cycle, 3D Mart is showing three of the 3D printing systems it sells; the Ultimaker S5, which uses Fused Deposition Modelling, in which a thermoplastic filament is heated to its melting point and then extruded layer by layer to create a 3D object; the DWS XFAB 2500HD, which uses stereolithography (UV laser technology); and the Sinterit Lisa, which uses Selective Laser Sintering, where tiny particles of plastic, ceramic or glass are fused together bit by bit by a high-powered laser to form the finished object. ■ **MW**



Hansheng Precision Double Suction labeling machine

**SunRACE**  
**STURMEY**  
**ARCHER**

**Automatic Hub**  
**2-Speed**



**E-MTB system**



**Rear Derailleur**  
 [ 9-Speed ]  
 [ 1 x 50/46/40T ]

**Trigger Shifter**  
 [ 12/11/10/9 - Speed Option ]  
 [ Single Shift ]



**Cassette**  
 [ 9-Speed Wide Ratio ]



**Chain**  
 [ 11/10/9 - Speed Option ]



Booth No. **J-1217**

## Overview: S-pedelec accessories

# New horns ensure speed pedelec riders are heard as well as seen

Speed pedelecs are a promising car alternative for commuters. But strict regulations in key markets mandate that these speedy electric bikes be equipped with special safety gear, including loud horns — not tinkly little bicycle bells.

Makers of s-pedelec gear have also developed some surprising accessories that help commuters stay warm in the cold.

A speed pedelec is an electric bike that is allowed to reach an assisted speed of up to 45 kmh, or 28 mph — much faster than the allowable assisted speed of a conventional e-bike, which is 25 kmh in the European Union and 20 mph in the United States.

Because an s-pedelec is more akin to a small motorbike than a bicycle, the European Union imposes several special requirements that do not apply to conventional pedelecs.

In most EU countries, s-pedelec owners are required to buy insurance, install a number plate, and wear helmets. In 2017, new EU regulations also mandated that s-pedelecs be outfitted with horns instead of bells, a rear stop light, front lights with full and dim beam functions, and self-retracting kickstands.

While these mandates have caused headaches for s-pedelec brands, they have created new opportunities for component makers. Some have responded by going beyond the mandates.

“Many people use their e-bikes like other people would use a car, on a daily basis,” said Erhard Büchel, president of Conebi, the association of European bicycle manufacturers. “In cold to moderate climates this has created a need for comfort elements that so far have only been associated with motorized vehicles.”

The EU regulations have dampened sales of s-pedelecs. Within EU countries, s-pedelecs have a market share of less than 1 percent of all e-bike sales.

But in Switzerland, which is not an EU member and does not impose such strict regulations on s-pedelecs, these speedy e-bikes account for about 15 percent of all e-bike sales.



Supernova M99 horn, mounted with its M99 light

The M99 headlight from **Supernova 1F/K0615** (at the Castello booth) has become standard equipment on many top-of-the-line s-pedelecs. Now it has debuted the M99 horn, which attaches with the M99 headlight on a combined mounting bracket.

A horn may seem like a simple product, but Supernova CEO Marcus

Wallmeyer said it was anything but.

“One challenge was to create a steady, powerful and unmistakable sound. By resorting to a design that has been proven on scooters, we got this right,” Wallmeyer said.

He added, “Another challenge was to limit the power consumption of the horn to a defined level. The reason for this is simple: If the horn needs too high

## The new E-Bike reference **E-LINER**



A full specific E-Bike tire range for MTB, City, Trekking, Road, Foldable Bikes, all with ECE-R 75 certification, special E-Bike compound for long durability and a sidewall construction that gives enough stability in any kind of surface.

**E-MAXX**

**E-BIKE 50**

**CHAOYANG**  
TIRES

October 31-November 03, 2018  
Taipei Nangang Exhibition Center, Hall 1, 4F  
Booth NO. N0332  
[www.chaoyangtire.com](http://www.chaoyangtire.com)



Roxim ZHR01 horn kit

a wattage, its use might provoke an emergency shutdown of the whole drive system."

One limitation is the energy supply for the bike itself. An e-bike battery feeds lights and other accessories along with the motor itself. But Wallmeyer said accessories are not supposed to draw more than 19 watts in total from the battery.

The button for the M99 horn has been integrated into the brake lever clamp. Supernova designed the horn to draw exactly 9 watts to prevent wattage peaks that could force the drive system to shut down. An ordinary cable that connects the lights to the motor or battery is sufficient to run the horn as well.

Taiwan light specialist **Roxim 1F/K0021** has also been working on a horn for speed pedelecs that is compatible with its other s-pedelec lights.

The Roxim ZHR01 horn puts out a blast of up to 115 decibels, which is almost as loud as a chain saw or a thunderclap. The horn draws 18 watts of power, within the allowable limits of most drive units.

To ensure the horn is as easy to use as it is to hear, Roxim teamed up with brakemaker TRP for a brake lever with the horn button integrated into the clamp. A second button on the other brake lever clamp switches Roxim's award-winning Z4E Pro headlight into full beam (see our related lighting overview on page 12).

And thanks to sensors built into the brake levers there's also a stop light function — thus ticking all the boxes of the EU's s-pedelec regulations.



Spanninga Decibel Horn, mounted beneath an Axendo 100 headlight

**Spanninga 4F/M0310** is another lighting specialist that has designed an s-pedelec horn. Fittingly dubbed the Decibel Horn, this unit creates a sound of 97 decibels, measured at two meters. In other words, it will make sure a cyclist is heard in traffic.

This powerful electronic horn is available separately, or integrated onto the fork bracket. Spanninga designed the Decibel Horn to match the look of its powerful Axendo 100 Speed headlight. The Dutch supplier sells the Decibel Horn separately, or bundled with the Axendo 100.



Magura HGI heated grip

**Magura 4F/M0814** has a long history in motorcycles and electronics, not just bikes. It surprised many when it debuted heated bicycle grips at Eurobike.

Called the HGI grips, Magura adds comfort that goes beyond the regulatory requirements for s-pedelecs. The HGI grips are intended as an OE product for commuters in cold and moderate climates and will begin appearing on some 2019 models.

The grips draw power from the e-bike's battery. Their built-in heating system can be adjusted to a maximum temperature of 40 degrees C (104 degrees F).



Büchel heated saddle, next to rear light prototype

Hands aren't the only body parts that need warming on a chilly, high-speed commute. **Büchel 4F/M0309** offers a fitting solution for another prominent contact point on an e-bike: the saddle.

At Taichung Bike Week, Büchel unveiled a comfort-oriented, generously padded saddle with built-in heating.

The saddle cover reaches a maximum temperature of 40 degrees C, although the heating unit built into the saddle gets significantly warmer.

The heating system is only intended to prevent a stone-cold saddle, not toast a cyclist's buns, so it automatically switches itself off.

Büchel also showed another interesting novelty at Taichung Bike Week: It's a rear light with a built-in accelerometer to detect when a cyclist is braking, thus making the rear light shine brighter. Current systems require sensors built into the brake levers.

While Büchel's solution is not yet legal in the EU, that could change. ■ LVR



Website: [www.jsagdz.com](http://www.jsagdz.com)  
E-mail: [jymj@bicyclelight.cn](mailto:jymj@bicyclelight.cn)

TAIPEI CYCLE SHOW  
BOOTH NO. F0521C  
Oct 31 - Nov 03, 2018

## INFORMATION FOR E-BIKE / BICYCLE MANUFACTURERS

You manufacture e-bikes / bikes and would like to utilise our lights?  
Please do not hesitate to contact us, we will provide technical and design support.

### German Approval JY-7078(30LUX)

Bicycle Dynamo Front Fork Light  
Function: Sensor automatic-On-Off  
With over-voltage protection  
With Stand light  
Adapt to 6W/2.4W or 6V/3W



### JY-7078E

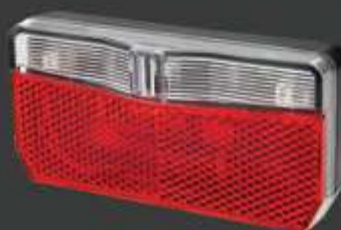
Bicycle Front Light For E-bike  
Adapt to 6V-36V  
Without Standlight,  
Without Sensor and Without Rear Light Cable

### JY-7078EL

Bicycle Front Light For E-bike  
Adapt to 6V-48V

### German Approval JY-397-1

Bicycle Carrier Light  
3 Super Bright Red 0.2W LED  
Side visibility  
Function: On-Off  
With low battery indicator  
80mm or 50mm carrier fit mount  
Battery: AAA\*2



### German Approval ECE approval JY-397

Bicycle Dynamo Carrier Light  
3 Super Bright Red 0.2W LED

DEFINE DESIGN DEVELOP

ASP7515BH-115

# EPIC STAGE

Booth NO. J0433

[www.chosenhubs.com](http://www.chosenhubs.com) [chosen.tw@msa.hinet.net](mailto:chosen.tw@msa.hinet.net)  
TEL +886-4-7588-777 +886-4-7588-889

**CHOSEN**  
CHOSEN CO., LTD.

# Visit 'Taipei Cycle Plus' in TWTC Hall 3

The main action at Taipei Cycle happens at the Nangang Exhibition Center, but it's well worth taking a free shuttle bus, or Taipei's efficient metro, to see the overflow exhibitors in Hall 3 of the Taipei World Trade Center. Think of Hall 3 as "Taipei Cycle Plus."

The TWTC, which used to be home to Taipei Cycle back in the day before Nangang existed, is in the heart of the Xinyi business district. It's right next to ATT4FUN, Shin Kong Mitsukoshi Department Stores and the iconic Taipei 101 skyscraper, which houses a large upscale shopping mall and a sprawling food court.

As well as complete bicycle and parts makers, Hall 3 hosts a range of startup companies, including LEV and IoT specialists. Visitors will find plenty of quirky and potentially groundbreaking products. Here are a few of them:



Averlogic Cyqlo

**AverLogic Technologies Corp. G0505** is showing the Cyqlo, a handlebar-mounted platform that, the company says, "turns your bike into a smart bike."

It connects to a rider's phone to offer cycling navigation. The display shows the distance to the next turn, while an LED light ring points you towards your destination.

The device has a 550 lumen headlight and a 1080p camera, as well as a Bluetooth-enabled alarm. The company says Cyqlo is the only thing a cyclist needs on the handlebars, and they could be right: The device also has a full-featured cycle computer and a 5,200mAh powerbank for charging electronic devices.

**Meachow Technology G0727** won a 2018 Taipei Cycle d&i award for its bike mirror made of an eco-friendly material. The arm folds on impact to prevent damage, to itself and to the rider, and it can be taken off one bike and installed on another easily. The mirror lens is coated to reduce glare.

The Transformer multitool is another 2018 d&i award winner, from **Emfiss. G0551** Instead of a complicated tool for bike geeks, the Transformer is designed with urban cyclists and commuters in mind. It's a modular system, so riders can choose the tools they need and combine them into a sturdy, easy-to-use tool. Options include a locking tool, tire lever wrench and even a bottle opener.

Did you ever feel your life was missing a backpack with a built-in Bluetooth speaker? If so, **Huitong G0248** has you covered with its Shield Bluetooth Speaker Backpack. Get up to 24 hours of



Meachow bike mirror

continuous play from your music devices with this strikingly designed piece of luggage. It also holds a 13-inch laptop in an interior compartment.

Another backpack maker, **Qbei G0422** attracts buyers with its chic, Japanese-inspired design. Established in Kyoto, Japan, in 1957, Qbei is now one of the top three sellers of cycling goods in that country. Its original Bikot brand of softgoods feature stylish, traditional Japanese patterns and multifunctional designs.

A number of eyewear makers are exhibiting in Hall 3, including Taiwanese brand **Envis. G0262** Like so many other Taiwan enterprises, Envis earned its



Qbei Bikot

chops as an OE producer for many big European and American sunglass brands. The Envis Transform sunglass uses lens that are 100 percent anti-UV400. The polarized lenses are also impact-resistant. (See tomorrow's *Show Daily* for more on sunglass exhibitors.)

Nearby is **Great Yo. G0256** another sunglass maker which has recently turned to ODM after 20 years of supplying major brands.

From R&D specialist **Evolvo/Cycle Chris G0458** comes the Karbon 9 sunglass. It's flexible enough to fit all head sizes, and extremely light at only 19g (0.7 ounce). Speaking



Emfiss Transformer multitool

of flexibility, Evolo is also showing a folding e-bike at its booth.

While we're on the subject of folding e-bikes, the MaxWolf hybrid bike from **Enermax G0302** has a magnesium frame for lightness and strength. A 250W rear hub brushless motor has three assistance modes. Front and rear disc brakes keep riders safe.



Evolvo Karbon 9

For a different type of e-mobility product, visit **Yean Fung. G0747** It's displaying a three-wheeled electric mobility scooter that was designed by a disabled person. For example, the folding seat allows easy operation and the scooter is uniquely agile and flexible.

Hall 3 is also the place to go for parts with something extra. How about QR skewers with integrated LED lights? Head for **Pan Taiwan, G0733** where you'll find exactly that, as well as their Red Dot 2011 award-winning QR seatpost clamp, also with LED lighting. The company has a wide range of parts on offer, as do many other exhibitors in the hall.



Enermax MaxWolf

**Ruey Shinn G0631** offers a range of e-bike parts including ratchet gears and shafts. Customers include Panasonic of Japan. Specialist supplier **Spring Ming G0622** is exhibiting its precision springs and retaining rings.



Pan Taiwan QR skewer with LED lights

The Bicycload series bicycle frame from **Starts Jump G0506** is available in two ranges, for daily and long-distance riding. It has a neat and commodious built-in luggage system that sits under the toptube. ■ **TK**



Starts Jump Bicycload

## Take the shuttle to Hall 3

Shuttle buses between Nangang and TWTC Hall 3 leave every 15 to 20 minutes from the main entrance of Nangang Hall 1. Buses run from 8 a.m. to 6:30 p.m. Wednesday through Friday, and from 8 a.m. to 1:30 p.m. on Saturday.

On Saturday, the last bus to the TWTC leaves Nangang at 1 p.m., and the last bus from TWTC to Nangang leaves at 1:30 p.m.

# New Products

## Vincita Urbano XL Double Pannier

Vincita's Urbano XL Double Pannier combines big capacity with a magnetic quick release. By installing the magnetic base on the carrier and attaching the bag on top, cyclists can quickly remove and reattach the pannier in seconds with a Fidlock Snap magnetic fastener. The bag itself is made of Cordura, known for toughness and durability. The main compartment opens wide for access to its capacious storage space. Available in Forest Green and Charcoal Grey. **4F/L1225**



## Miranda Aluminum e-bike Cranks



Miranda's award-winning aluminum e-bike cranks comply with the specific requirements that are often unique to each e-bike manufacturer. Each crank is made through a proprietary cold-forging process with cutting-edge metal processing technologies. A dedicated engineering process eliminates weak points by distributing loads, for a light crank that resists fatigue and high-impact stress. From its factory in Portugal, Miranda can supply cranks for most e-bike models with its wide range of designs. Miranda also accepts special requests. **4F/L1216**

## Hutchinson Skeleton Tan Walls Limited Edition

A potent XC tire, the Skeleton excels on dry or mixed terrain whether mounted front or rear. It find middle ground between the Hutchinson Cobra, known for its lateral grip and directional profile, and the light, fast Black Mamba. The 53mm tire rides well at low pressures with Hutchinson's best XC casing (127 TPI). The Skeleton Tan Walls Limited Edition with Tubeless Ready Technology is limited to 1,000 pieces and comes in a 29x2.15-inch size. **4F/N1114**



## Neco Neco5 Manual Pedal

The Neco5 Manual pedal can be mounted or removed without tools, so a bike can fit more easily into a car trunk, or be a lot less attractive to thieves. The body is made of aluminum and the spindle of chromoly, while sealed bearings add durability. The Neco5 won a Taipei Cycle 2018 d&i award. **1F/T1130**



## Sun Race Sturmey-Archer A20 automatic 2-speed Gear Hub

With a gear ratio of 137 percent, the Automatic 2-speed gear hub supports a comfortable ride without the hassle of shifting gears. It comes in two versions: shifting at 14 kmh (7 mph) for the standard version and 18 kmh for the e-bike version. It is also available with integrated 90 and 70mm drum brake, disc brake, and freewheel. All have aluminum alloy hub shells. **1F/I1217s**



ENGLISH



**Light weight!** Storage Innovation

**K3 BIRO**



**CUSTOMIZE YOUR BIKE!**



BOOTH No. **L1018**



CROPS Co.,Ltd.

www.crops-sports.com

# New Products

## Chosen Boost TC Hub



Chosen says “higher conduction efficiency” is the advantage of its Boost TC hub. Pedal power is transmitted directly, with less energy loss, through the large surface engagement of the tooth coupling. The reliable ASP8316 is a top performer. **1F/10433**

## APro Tech E-Road ER93701

It looks like a svelte road bike, but it has a hidden secret — a discreet electric motor. The motor kicks in only when needed, such as while climbing a hill, and disengages completely when the cyclist reaches a speed of 25 kph (15 mph). APro’s E-Road is another indication that road bikes are the next big segment that will quickly become electrified. **1F/11210**



## FPD NWL-487 MTB pedal

FPD’s new NWL-487 MTB pedal features a big 114x105mm platform with small pins for grip. FPD’s new semi-bearing system offers smooth rotation and good durability at a reasonable price. It meets ISO 4210 standard. **4F/10820**



## Taya Chain 11 speed Onze Feather Chain



Taya made its top 11-Speed chain lighter, stronger and more accurate. The Onze Feather Chain uses a new, patented technology that exceeds ISO standards and extends chain life by 1.5 times. Features include 360-degree riveting, DHT super hardening, and deep plate chamfer designs. A special chain plate process and new roller design results in a chain that’s light, quiet and smooth-shifting. **1F/K0610**

## Beto Air OnDemand

The Air OnDemand 2-Stage Floor Pump from Beto comes with a digital gauge and features a new ergonomic side-kick lever to select High Pressure/High Volume mode. This 25.6-inch pump has an external steel barrel with a welded-on steel base, an alloy inner barrel and a large, 2.5-inch digital gauge with a bleeder valve. A ball needle and inflator are stored in the quick-release handle cap. The patented auto head fits Schrader and Presta valves. **4F/N0725a**



## TRP E-Bike Hydraulic disc brake

TRP’s HD-E840-2 is newly designed for electric mountain bikes. Because weight is less important on e-bikes, TRP expanded the rotor thickness to 2.3mm – reducing heat buildup by 8 percent and rotor deformation by 15 percent. The caliper uses an open top design for easy pad replacement. Hybrid pistons balance heat management with reliable, smooth actuation. **1F/10112**



## Dapu MD65M

Dapu’s newest mid-drive motor, the MD65M, is small and light at under 2.2kg (4 pounds, 14 ounces). But it puts out an impressive 220/250w and more than 60Nm of torque, with efficiency greater than 80 percent. **5F/F0512**



## Zéfal Pulse B2

The Pulse B2 bottle cage combines two materials with distinct properties. The center of the reinforced composite structure brings the necessary rigidity to reduce vibrations and ensure excellent bottle retention, while the technopolymer resin offers flexibility and luster. **4F/M0301**



## SKS Germany Compit

The Compit smartphone holder combines three functions in one compact system: it’s a mobile phone holder, a Qi-certified wireless charger with an integrated NFC chip, and a mount for a front light or action camera. The Compit will charge a smartphone inductively while you ride. The well-thought-out control unit can be attached to all common handlebar/stem combinations. The Compit is neat, clean and intelligently interconnected. **4F/L1217**



## Crops K4-Biro

Crops’ K4 dimple key cylinder design offers greater security and the option to attach the company’s Lion anti-theft alarm. Its Biro cable incorporates patented memory coil technology for flexibility and durability. It fits snugly beneath the saddle so it looks good and won’t snag on the rear tire. **1F/L1018**



# New Products

## Chaoyang E-liner

Chaoyang offers a wide range of tires for electric bikes in its E-liner series. The Offroad AT (pictured) is an all-rounder built for light off-road use. Tight center knobs ensure a low rolling resistance. Other tires in the E-liner range include the Offroad MT for aggressive riding; Plus AT for sandy or tarmac tracks; Plus GP; Road; City; Tour; Urban; and Folding. **4F/M0332**



## Relic Clipless pedal adaptor

Relic's CPA (Clipless Pedal Adaptor) for Shimano's SPD system allows a quick and easy changeover to non-slip platform pedals for use with non-cleated footwear. Fabricated in lightweight AL6061 T6, the adaptor weighs just 168 grams and offers a platform of 73mm x 77mm, with a thickness of 16mm. **10517**



## Miranda Xmod direct mount road cranksets

Xmod, a modular crankset, now offers a double chainring combo for road bikes that reacts instantly to pedaling forces for a smoother ride. It's lighter than a standard double or triple ring-spider-bolt combination but is more durable and stiffer and has better power transfer. The Xmod is CNC-machined from a solid block of aluminum and mounts directly onto the spindle. A titanium axle and chainring design locks flush with the right crank arm for longer life. The Xmod is compatible with all standard bottom brackets and comes in 50/34 and 53/39 chainring combinations. **4F/L1216**



## Bear Pawls BEB004

The BEB004 rear hub is Bear Pawl's solution for the power and instant torque of e-bikes. A steel cassette body is mated with a semi-high flanged hub shell for wider spoke angles and thus a stronger wheel. Four sealed cartridge bearings are spaced to distribute internal forces while maintaining high rolling efficiency. The BEB004 is exclusively for disc brakes and uses a traditional 6-bolt rotor mounting pattern. **1F/1117**



## Michelin E- Wild



Made for e-bikes, the E-Wild Front E-Gum X uses new rubber compounds and a tread pattern from Michelin's Enduro tires for grip. A Gravity Shield casing improves protection, while an inner layer and central rubber boost performance and rolling strength. The Michelin E-wild Rear E-Gum X uses a new generation of top-of-the-range compounds for better rolling strength with less effort. **4F/M0304**

THEY DELORHE

# KSS

SEE THE FULL LINE **BOOTH i0529**

LEV

LEV

# LEV

CARBON, TITANIUM AND NO COMPROMISES

WWW.KSSUSPENSION.COM

# New Products

## KMC X12 Classic 12-speed chain



The X12 chain for 12-speed drivetrains uses a comprehensive X-Bridge on the inner wall of all chain plates. The narrow design adapts precisely to the limited gear space while improving functionality despite the extreme cross chaining inherent to 1x drivetrains. Asymmetrical chamfering is strategically placed on outer plates to avoid interference between the chain and the cassette teeth. Upgraded bevel chamfering on the inside edges of the plates enable a smooth gear tooth insertion and an efficient interface between chain and cog. **1F/J0118**

## Sun Race Sturmey-Archer E-bike derailleur set

A new derailleur set for e-bikes includes a cassette with a wider gear ratio of 12-50T. Chains have higher pin-power and tensile strength, while chromized pins and a Teflon coating on the inner plates ensure the chains will resist wear for longer. A “one trigger for one gear” shifting mechanism reduces wear by cutting down on overshifting. An adjustable chain stabilizer at the rear derailleur cuts down on derailleur bounce and chain slap. **1F/J1217**



## Messingschlager premium e-bike solutions

Messingschlager’s premium e-bike solutions combine two frame and battery concepts with four frame designs each, designed in cooperation with Brose. They help brands get to market quickly — within six months — without the high cost of custom development. Messingschlager guarantees the highest standards of testing and compliance. **1F/J0512**



## Velo Triple-E Trekking Grip

Following the Triple-E grip’s success, Velo has launched a sibling product, the Triple-E trekking grip. With a larger zone at the palm area, these grips bring better comfort for more upright positions. Microtech technology enhance friction at the fingertips. **1F/J0717**



## KS Rage-i

New to the KS product line is a range of low-cost droppers starting with the Rage-i. The Rage-i (and variants soon to be released) offer virtually all of the style and function of KS’s higher end offerings at prices well below the competition. These models utilize 2-bolt microadjust heads, a modern seal head (without collar), a stealthy black anodized finish, and travels up to 150mm. In addition, these droppers are over 100g lighter than their predecessors. [www.kssuspension.com](http://www.kssuspension.com) **I0529**



## Otion MicroTex road lever grip

Otion brake and shift lever grips for road and mountain bikes boost grip in wet and dry conditions. The micro-cilia texture increases surface area contact while venting moisture, whether from sweat or precipitation. **4F/L1004**



## Topeak CubiCubi Light Series

The CubiCubi modular LED cycling light system gets its name from its cube-like design. LED lights and different capacity battery sets can be assembled to meet different needs. Riders can customize the light output and burn time by switching between different batteries. Multiple mounting boxes can hold two CubiCubi Lights or additional CubiCubi Battery and GoPro Session for high-powered illumination or recording. **4F/M0711**



## Otrajet Nexo 700x40c airless tire

Choosing the right e-bike tire is important because it is difficult to remove the wheel. A Nexo 700x40c airless tire, made for e-bikes, is burst-proof, inflation-free and lasts a long time. It never goes flat, so users don’t have to worry about wheel maintenance. Each tire supports 70kg (154 pounds) of weight — so 140kg for the complete bike — and supports non-stop trips of up to 50km (31 miles) at speeds below 40 kmh (25 mph). **1F/K0202**



## Hamax Outback

The comfortable, spacious Hamax Outback bike trailer now comes with a reclinable seat back with three positions, so your child can find the best setting for comfort. The Outback’s strong, stable frame and low center of gravity make it a good fit for an e-bike. With the right accessories, the Outback also can be used as a stroller, a jogger and for cross-country skiing. **4F/L0527**



## Lake Cycling CX421

With IP1 Boa-powered articulating closure panels and a large customizable closure zones from heel to toe, the Lake CX241 fit unique foot shapes. A heat-moldable heel counter and uniquely designed upper is adjustable enough for feet with any instep height or foot volume. **4F/M0206**



# New Products

## Velocite Venn Var 77 rims

Venn Var 77 rims were designed with autonomous Artificial Intelligence. It's one of the most aerodynamic non-disc rims on the market. The AI program was only given the design boundaries and was not taught, or interfered with, during the design and optimization process. This cutting-edge process is based on years of research and collaboration with leaders in the field of Computational Fluid Dynamics (CFD) and AI. Velocite has also developed a fully automated composite rim manufacturing method that uses continuous fibers with thermoplastics (rather than thermoset resin). **4F/L0401a**



## FSA NS Super Compact Carbon PowerBox

With a convertible spider design for different chainring and chainline configurations, the NS Super Compact Carbon PowerBox is made for 11-speed systems. Carbon composite arms have a UD finish. The spider is made of forged 6061 aluminum that's then CNC-machined. Available in 170, 172.5 and 175mm lengths. **1F/M1212**



## Wellgo E342

The reinforced pedal body and spindle of Wellgo's E342 offers great strength. This 433g aluminum pedal with a CroMo spindle and three sealed bearings is compatible with RC-5 and RC-6 cleats. The single-side road clip design is elegant and provides great support. An enlarged rear claw grabs on the cleats for better safety. **1F/M0517**



## Seatylock Foldylock Clipster

The Foldylock Clipster is the first wearable folding lock on the market. Its integrated belt clip attaches to the rider's belt, trousers or bag. Weighing 1kg and rated Sold Secure silver, it is the lightest lock in its category. **1F/M1407**



## Vee Tire Flow Snap Junior

Vee Tires makes better tires for kids' bikes with junior versions of its Flow Snap models. The Junior has the same specs as its big brothers and comes in sizes of 20x2.4-inches and 24x2.4-inches with Enduro Core. Tires are 72TPI and include Vee's Tackee Compound and folding bead design. They are also tubeless-ready. The Flow Snap Junior is available for OEs and for the aftermarket. **1F/M1031a**



# wellgo

BOOTH : J0517

## E342 EXERCISER



433  
g/pr

Reinforced pedal body and spindle offers great strength for rider's needs. With its single side road clip design offers both elegant for the bike and great support while in class. Enlarged rear claw grabs on the cleats better to ensure safety for the riders.

# Less Is More

Velo saddles have launched different categories of saddles following the latest short saddle trend, to enhance your riding experience .



Eliminate the length:  
performance driven orientation



Eliminate the staples:  
aesthetically improvements



Eliminate stitching:  
water-proof validation



総括: wide road tires

# 新たな道を開く幅広タイヤ

最小化の長い時代を終えてロードバイクのメーカーはよりベターなものを目指すそのマントラ（合言葉）を変えつつあるようだ。その中でタイヤの幅に関しては、広げる方が良いという主張が多く聞かれる。それはレースで競わない大勢派のタイヤにはなおさら当てはまる言葉だ。50年以上にわたってロードバイクのタイヤは、23mmがほぼあらゆる状況に対するドグマであると石に刻まれてきた。この基準からの逸脱が認められていたのがスムーズな路面で競うタイムトライアルとパリ〜ルーベなどとりわけ悪路を走るレースだけだった。

しかし、ロードバイク市場における近年のディスクブレーキの台頭がサイドブレーキで定める規制を無くさせた。レース指向型フレームでさえ28mmのタイヤを念頭に造られている。その結果、エアロードバイクも定義上は成り立ちコブルストーンでも走ることができる。多くのタイヤメーカーがこうした変化に素早く反応し、幅の広いタイヤに乗ることで悪路の路面での快適性と予測可能な牽引力を求めるライダー向け製品を手掛け始めている。

もしこうした幅広のタイヤがインナーチューブ無しに、その代りシーラントを施してチューブレス対応のホイールに装着されればその恩恵はさらに大きなものになる。そうなれば幅広タイヤのローリング抵抗（転がり抵抗性能）における不利も無くなるしパンクからの保護もひとつの大きな利点となって舗装されないダブルトラックや砂利道へと走行可能範囲を上げられる。後三角のタイヤクリアランスをさらに最大限にするフロントディレーラーを装着するオプションをしばしば外しているグラベル専用バイクに関して言えば、本格的アドベンチャーライダーはさらに一歩進む道を選ぶ。ホイール径を650bにダウンサイズすることで幅50mmものスパイクタイヤを装着することができ、実質的にグラベルバイクをドロップバーのMTBに変えてしまう。一気に90年代初めのバイクレジェンドJohn Tomacの時代へと回帰する。

しかし一般ライダーへの訴求という点では、幅30mmないし32mmのロード用タ

イヤが最大の訴求力を持っているようにみえる。より幅の広いタイヤの利点の多くを備えつつほとんどのフレームに装着できて伝統を重視するサイクリストとの相性も失わないからである。

ロードバイク用オーバーサイズタイヤで大きな成功を収めているメーカーの1社にSchwalbe **45mm**がある。小さな円形スパイクと30mmの幅を持つ”G-One Speed”は舗装道路でもグラベル（砂利道）でも等しく本来の性能を発揮するが、舗装されない曲がり角での牽引力に限界を持つ。この弱点への対応として同社では幅40mmとショルダーノブを持つ新モデル”G-One Bite”を追加する一方、さらにもう一つの新モデル”X-One”がグラベルライド用とチクロクロスとの間の溝を埋めている。最新トレンドの最前線にいるSchwalbeの斬新さは”E-One”にそれが見て取れる。”G-One”をベースとする”E-One”のタイヤは幅28mmないし32mmが用意され、強化サイドウォールとケーシングを特徴として電動ロードバイク用に設計されている。



VeeTire

ンも用意されている。これに加えて700c用Gravel Kingではブラックとブラウンのサイドウォールと3つの追加カラーからの選択が可能なので自分のバイクにぴったりマッチするタイヤを見つける選択の幅もぐっと広がっている。

2019年に向けてロードバイク用に新しい幅広タイヤを送り出しているもう1社にタイの最有名メーカーVeeTire **45mm**がある。新しいトレンドを受け入れて素早く反応するVeeTireは追加オプションとして”G-Sport”を投入している。細かいダイヤモンド状スレッドに700x35cから700x44cに至るディメンションで供給されるこのタイヤは転がり抵抗性能の高さと心強いボリューム感を兼ね備えている。

さらにケーシングとサイドウォールが強化されたためEバイク用にも使えるようになっている。ゆるんだ道やより過酷な状況での使用に対してはデュアルコンパウンドの”Rail Sport”がベストチョイスで、同モデルはセンター部分の浅いスパイクとショルダーのスパイクによってグリップ力を著しく高めている。700x40cと650bx47の2タイプを用意。最後に忘れてならないのが高い転がり抵抗性能を誇るロードプラスタイヤ”Zilent Sport”で、同モデルは650bx47サイズに絞って供給される。



オールロードのアドベンチャーライドに色を添えるPanaracerの”Gravel King”。

Schwalbeは”E-One”を電動ロードバイク用強化タイヤとして投入。



日本のPanaracer **45mm**は舗装道路にも非舗装道路にも適した汎用性のある幅広タイヤの魅力ある製品ラインを揃えている。2019年に向けては人気の”Gravel King”および”Gravel

King SK”シリーズにチューブレス対応モデルを追加している。とりわけ雨天や道がゆるんだ状態に対してはスパイクを深めにした”Gravel King Mud”が嬉しいオプションとなるほか、幅32mmと38mmの既存バージョンとは別に35mmがオプションとしてラインアップに追加されている。ロードにコンセプトを加えたいライダーには”Gravel King”でそれぞれ27.5x1.5と27.5x1.9のディメンシ

WTBはロードバイク用幅広タイヤの魅力あるセレクションを揃えている。



ロードプラスコンセプトに関しては **WTB 4階/10826** がその” Horizon”と” Byway”の2モデルをもってパイオニアの役割を担ったと正面切って言えるだろう。2019年に向けて同社は650b x 47サイズでさらに2つのスパイクタイヤをロードプラスのラインアップに追加した。融通性を追求した” Venture 47”は高い転がり抵抗性能の補助センターラインと伝統的エリアとショルダーに増やしたスパイク部分とを組み合わせた。それよりさらに逞しいのが” Sendero 47”で、一見するとドロップバーバイクの使用に最適のMTB用タイヤのように見える。700cリムにこだわるライダーに対しては転がり抵抗性能の高い” Exposure”タイヤの32mm幅バージョンを追加。これにより高い転がり抵抗性能を持つ30mmバージョンとテレイン向け34mmバージョンとの溝を埋めている。十分なタイヤクリアランスを持つグラベルバイク用には” Rolute 42”が非舗装面走行の全天候型として最良のオプションになる。きっちり設計されたトレッドが滑りやすい路面でコントロール性を保ってくれるからだ。

別の角度から幅広ロード用タイヤのコンセプトにアプローチしているのが **Donnelly Sports 4階/1070** である。元Clémentとして知られる同社はチクロクロスからグラベルへとラインアップを拡げ、現在” CDG”によってロードバイクタイヤ市場に参入している。” CDG”は幅30mmで悪路やコブルストーンでの牽引力を高めるためショルダーに細かいリブパターンを施している。さらに高い牽引力やボリュームを求める向きには幅32mmで転がりを一段と早めた” Strada USH”と幅36mmから揃えた” X’ Plor MSO”さらに幅38mmの” EMP”がそれぞれテレイン指向型トレッドのオプションとして揃う。” CDG”を除いてこれらのタイヤはいずれも27.5吋リム用のロードプラスサイズも用意されている。

**Ritchey 4階/1112** も、悪路での快適性とコントロール性を求めるライダーや舗装道路を置き去りにしてまでグラベルを走ろうと計画する人達に向けたタイヤを3モデル用意している。幅30mmの” Alpine JB”は快適性とパンク保護力を高め、穴ぼこが散らばるカントリーロードでのトレーニング用にうってつけのチョイスのように見える。焼き入れスキンウォールによるスタイルの良さもポイントだ。同タイヤの35mmの幅広バージョンはチューブレス対応で、幅広タイヤのコンセプトの恩恵をさらに高めている。また若干アグレッシブ感を強めたトレッドが特徴の” Speedmax”は700x40cディメンションで、舗装された道路を外れて走る時間が長い本格グラベルライダーをターゲットにしている。



Michelinの”Power Gravel”は細かいセンタートレッドとショルダーのスパイクに特徴がある。

タイヤ市場のビッグプレイヤーの1社 **Michelin 4階/10804** は” Power Gravel”の製品ラインでグラベル市場を狙っている。タイヤ幅33mm、35mm、40mmの3タイプを揃えた折り畳み可能でチューブレス対応のPower Gravelはパンク保護力を高めるビーズ・ツー・ビーズの保護層とグ



IRC Tiresの”Serac XC Sand”の細かいダイヤモンド型トレッドはゆるい路面で高い性能を発揮する。

ラベル用トレッドデザインが特徴で、舗装道路で転がりの早さを保持しつつゆるんだ路面で十分な牽引力を発揮する。素材にX-Milesコンパウンドが使われているのでタイヤの寿命も延びることが想定される。なおMichelinでは、33mm幅のチューブラーおよびクリンチャー両バージョンで販売される” Power Cyclocross”の素材の一部に伝説のグリーンタイヤ・コンパウンドを復帰させる。いずれのタイヤも販売は2019年下期以降になる見込みだ。

**Duro** (ブースNo. K0116)も同社人気のロードバイク用タイヤのうち2モデルに32mmバージョンを加えたお蔭でロードバイクタイヤの広幅化トレンドから授かるビッグチャンス逃さずにいられる。2モデルのひとつ” Stinger”はブラック、レッド、ブルーのラバーコンパウンドを用意、一方の” Dorado”は滑らかな中央部が生み出す高い転がり抵抗性能と、ショルダーを細かいダイヤモンド型トレッドにすることで曲がり角でのハンドリングとグリップ力を向上させるデザインが特徴だが、この2つの特性を組み合わせることで高性能が発揮される設計になっている。

3つの新モデルを引っ提げて**IRC Tire 4階/10515**もグラベル市場に絞り幅広ロード用タイヤへのトレンドに加わる態勢を固めているようだ。ロードにもさほど荒れてないオフロードにも繰り出すライダーに向けた” Serac CX Sand”は細かいダイヤモンド型トレッドと32mm幅を持つ新モデルでグッドチョイスのひとつに挙げられそうだ。タイヤ幅をさらに広げショルダーのス

パイクを増やした” Boken”はゆるんだ路面に最適で曲がり角での牽引力を存分に発揮する。タイヤ幅は36mmと40mm。27.5吋のリムに合わせたロードプラスを求めるライダーには650b x 42と650b x 47のサイズで” Boken+”が用意されている。

イタリアの代表的タイヤメーカー **Vittoria 4階/10439**からは舗装道路にも酷いグラベルにも優れた性能を発揮するようデザインされた” Terreno Zero”が投入されているが、同モデルにはいくつかの実証済み設計要素が組み合わされている。センタートレッドはスムーズで同社のロード用タイヤ” Corsa”のそれを探り入れていることから転がり抵抗が最小限に抑えられる。曲がり角での牽引力を増すためショルダーは魚のうろこ状トレッドにしているが、これによりサイドウォールの一部も強化される。グラフェンを加えた3cコンパウンドのお蔭で耐久性があって回転もスムーズに仕上がっている同タイヤは700x35cと650x47cの2サイズを揃えている。

**Kenda 4階/10716**も最上級のValyrieを幅30mmの各種バージョンで拡充することで幅広タイヤへのトレンドに対応する態勢を整えているようだ。幅広タイヤの一部はコストを下げたケーシングを使っているがトップモデルはチューブレス対応で、ビーズ・ツー・ビーズの一体型保護構造がきっちりパンクから護ってくれる。

Valkyrieの高い転がり抵抗性能を加えれば市販最速クラスの幅広ロードバイクタイヤの出来上がりとなる。



Ritcheyの”Alpine JB 35”は転がり抵抗性能と曲がり角でのグリップの良さを兼ね備。



”Dorado”と”Stinger”でDuroは2つの人気モデルを32mm幅に広げた。



Kendaは高い転がり性能の”Valkyrie”モデルにビーズ・ツー・ビーズのパンク保護を加えている。

## 総括：ライト

自己発電式から高性能型まで新技術は自転車ライト  
市場のすべてのセグメントを活気づかせている。

新しいパワーソース（電源）が自転車用ライトに大きな変革をもたらしている。その変革のひとつにEバイク用バッテリーがある。Eバイクのバッテリーによるライトは車やオートバイのそれを上回るほどの明るさを放つ。一方で、革新的ライトはバッテリーやドラッグ無しでエネルギーを生み出すために自転車のリムによって生まれる電流を使っている。このいずれかで、ライダーは自転車で出かける間に安全と可視性を保つために急速に進歩する技術の恩恵を受けている。従来型ライトも、ライトと遠隔操作間で強まる同期化がさらに広まる中で高機能化が進んでいる。

**BikeSpark** **413/60612** の自動センサーリアライトもまた極めて高性能で、自転車に乗ると自動的にスイッチオンする。同様に活動が止まって1分後にバッテリーを保存するため自動的にスイッチオフに切り替わる。それだけではない。第2のトリックはブレーキの必要を感知すると明るさを2倍にしてロードユーザーに減速が迫っていることを警告する。従来の特性も無視されおらず、リチウムポリマー（Li-Po）バッテリーがたっぷりの35ルーメンを出し広角220°を照らす。IXP5への耐水性がありツール無しでパッケージの周りに取り付けられる。



Lezyne



Xbat

**Xbat** **413/60612** はダイナモライトに収穫をもたらす画期的回転エネルギーを造っている。自転車の既存の金属製リムが生み出す磁場が、電流を起こすためにディスクブレーキローターボルトの脇に設置された磁気のいずれかを使って同社はキャリパーの傍に直接装着する2つのモデルを生産している。バッテリー無し、従って再充電の必要がまったくない同社製品は非接触でまるで魔法で動いているかのようだ。従来型ロードキャリパーブレーキ用設計のXbat-C1は完全防水で自動起動が特徴。ブレーキパッドの裏に設置しほんのわずかのスペースしか取らず、他の製品と違って磁石を付ける必要がない。



Cateye



Lezyne



Cateye



Cateye

同じくワイヤレスコントロールを使って**Lezyne 400XL**の新しいライティングシステムConnect Driveはクイックアクションの2ボタンワイヤレス・リモートスイッチで作動する。フロントとリアの両ユニットをコントロールするその第1ユニットをLite Drive 800XLと呼ぶ。放熱機で造られたアルミ本体に収められた高出力LEDは最大800ルーメンの光を放つ。日中に注意を引き付けるフラッシュをはじめとする8つのモードをもつMOR（最大光反射）レンズはサイドに可視性が出るよう組み込まれている。後部をガードするのがStrip Driveで、その5つの超高出力LEDは最大150ルーメンの光を放つ。円形、エアロの両ポストに対応し、フロントライト同様ツール無しで簡単に取り付けと交換ができる。



AXA

Compactlineによるダイナモライトの成功を基盤に**AXA 400/MOTUS**は市場ニーズにぴったり適応するUSB再充電式バージョンを発売した。ハンドルバー装着タイプの新ライトは出力20ルクスと35ルクスの2タイプで同社のダイナモおよびEバイク用ライトと同じデザイン特性を備えている。両モデルともサイズはコンパクト、円形放光が特徴で前方への照明に優れるとともにサイドの可視性も増している。10ルクスのエコ出力とフルパワーを相互に切り替えることもできる。これによりそれぞれ最大12時間が15時間の照燈が可能になる。周辺セットに小型の単体リアライトがある。このライトはひとつのLEDを使うだけで最大300m先から目に留まる。



Kryptonite

**Kryptonite 400/MOTUS**の新モデルAlley F-800はコンパクトながらその堅牢性は注目すべきレベルにある。出力800ルーメ

同様のアプローチを取っているのが**Cateye 413/60612**だ。同社はCatEyeSYNCと呼ぶ同期化ライティングシステムを市場投入している。ヘッドライトのシングルスイッチでライトを起動できる同システムは現在3ユニットで構成され、いずれもスマホとのペアで使える。リードユニットのSync Coreライトが他のすべてをコントロールする一方、後部をガードするのがSync Kinetic。これは減速する時に後続のライダーや車のドライバーにその旨を知らせるための恒久的活動機能が特徴。バッグや衣類の可視性を高めるものとしてSync Wearableのドットが最後の選択としてある。最大7つのライトと合わせられ、そのフラッシュパターンとの同期化で可視性がアップされる。



BikeSpark



SKS



SKS



SKS



Smart

ハイスpek パーツの総体とも言える **Smart 127/10414** の新モデルRays 150は Cree LEDにリチウムポリマー再充電式バッテリーさらに反射光学設計を組み合わせた画期的製品で、コンパクトかつわずか 33 g という軽さ。ハンドルバーに付けてもほとんどスペースを取らず、取り付けにツールも要らない。出力30ルクスで各必須基準を満たす同製品はドイツ市場に最適だ。充電およびバッテリー残量低位表示によって常にバッテリーの状態がわかり、ライトのサイドへの可視性が広がっているの急な角度で接近してくる車のドライバーの目に留まりやすい。

ひとたびフロントホイールに組み込まれると **Neco 127/11130** のRove Dynamo Hub Power Generatorは整流器を通して交流を直流に変換し同社のステアリングチューブ装着型3-in-1 Intelligent Portable Chargerを使って蓄電できる。どんな辺鄙な遠隔地でも電子装置の操作が続けられるこの出力は従ってどんなUSB電子デバイスへの充電にも使える。昨年のTaipei Cycle d&iアワードの受賞作で、電動要素をヘッドチューブかハブに内部。その結果として自転車の外観や操作性を損ねることのないシームレスパワーが生まれた。



Macro Machine Co.



Macro Machine Co.



Neco

**Macro Machine Co. 127/603142** は Cosmosブランドによる2つのダイナモハブ新モデルを出展している。両モデルともドイツの特許を取得済みだ。第1のモデルCosmos CO-03は直流出力6V-3Wでディスクまたはドラムブレーキ用に設計、32および36ホールのリムに適應する。姉妹モデルのCosmos CO-04は出力6V-4.5Wで、定電流システムを使って携帯電話やGPSデバイスへの充電キャパを提供したい公共自転車利用計画事業者をターゲットにしている。



SunUp Eco Co.

**SunUp Eco Co. 127/10503** のSpinUpブランドは世界初を謳うインテリジェントパワー・ディストリビューションダイナモをリリースした。自転車用USB充電式ダイナモは変換器の必要がなく iPhonesや iPads などApple製品への充電が効果的にできる唯一のシステムという。重さわずか350 gですべての電子装置がハブに一体化されて時速13km以上で走行する時に1Aの出力を可能にしている。ライトその他の電子装置への充電も等しく可能で、余分な抵抗を受けることもほとんどないため澆刺とスムーズなサイクリングを経験するにはうってつけだろう。



Shengguang Electronics

ダイナモかあるいはEバイクのバッテリー電源に直接接続したいユーザー向けに **Shengguang Electronics 127/5212** はライトの新モデルJY-7091を2タイプで上市した。JY-7091両モデルとも出力90ルクスでドイツ市場においては認証済み。しかしEバイクのユーザーにはさらに多くの特性が用意されている。まず第1にツインライトソースがデイトタイム用と走行用の別個のライトを可能にした。センサーによるコントロールで周囲の明るさに応じて自動的に起動する。両モデルともそれに相応しいリアモデルがバックアップしているが、リアモデルもドイツ市場に対する認証を取得している。



Herrmans

**Herrmans 127/10210** のH-Blackシリーズのライティングシステムが3つの新モデルによって拡充された。最も明るいのがH-Black Proで出力200~230ルーメン、プロジェクタ技術により26m先まで照らすことができる。眩しくなく、光線の端に鋭いカットオフラインができる新モデルはダイナモとEバイク用を用意。ともに取り外し可能なクリック式リフレクターが取り付けられる。価格は下がるが同様のスタイルを保持しているH-Black MR4は出力100~120ルーメンで18m先を照らす。同社では自転車メーカーとのコラボによるOEM用モデルの生産も視野に入れている。



Roxim

最後に、すべてのピースを加えて一体化させているのが **Roxim 127/10021** である。コックピット周りの製品として同社は警笛、前後ライトコントロールさらにブレーキレバー作動による停止警報を組み合わせた高度一体型でニートなEバイク用モデルを上市した。ペダレック用と高速ペダレック用の2バージョンを用意。ともにTektroのブレーキレバーシステム対応設計となっている。起動ボタンがレバーの装着プレートにきれいに収まった両システムはライトの起動をコントロールできるほか、レバーを引くと後続の車や自転車に注意を払わせることができる。高速ペダレック用には警笛制御回路も含まれてヨーロッパで使用できるECE規格認証を受けている。

# New Products

## DIZO BIKE EOS



EOSはフルカーボン設計（全ドロップアウトを含め）で、フレームセットの耐衝撃性と剛性を高めるためにTorayのカーボンファイバーT1100を素材に採用。フォークブレードとリアチューブの形状は乗り心地と加速力、剛性を高めるのに最適の設計になっている。さらにダウンヒルでの効率的なパワー伝導と安定性をアップするためBB、ヘッドチューブ、チェーンステイへのカーボンのレイアウトにも工夫が凝らされている。ロードにもクライムにも最適。

ベースL1108

## Topeak Ninja Master Cage Series

TopeakのNinja（忍者）シリーズケージの第2世代モデルNinja Masterはボトルケージとアクセサリを一体化することで自転車のフレームのすっきりしたラインを保つ。

素早く取り付けられる独自のQuickClick Mounting SystemによりTopeakのモジュールアクセサリ（ツール、タイヤバッグ、Co2カートリッジ）からどんなライディングスタイルにも合わせて選べる。QR式装着のお蔭でボタンひとつ押すだけでアイテムをリリースできる。

ベースM0711



## Michelin Power Gravel



タイヤ全体のケーシングを保護するBead 2 Bead Protekによる補強とタイヤの寿命を延ばす独自の新コンパウンドX-Milesにより強度をアップ。抵抗を抑えるスモールブロックのトレッドパターン（Gravel Design）とどんな路面でも対応できるグリップ力でロードにもトレイルにも最適。3x110 TPI、33c、35c、40cを用意。

ベースM0304

## Bio-Key TouchLock Bike Pro

TouchLock Bike Proは生体認証とBluetoothを活用した自転車用ロックで、ユーザーの指紋を認識装置にあててか或いは顔認識を使うか、或いはまたBluetoothアプリを使って暗証番号を入力することでロックを開くことができる。耐候性もあって友人や家族とも共有できる。使えば何よりも安全で便利。

生体認証技術やユーザーに馴染みのBluetooth技術とアプリを使うのはユニーク。選択の自由があって共有できる点もポイントだ。

ベースG0649



## 720 International Alpha

台湾の大手サングラスメーカー720armourのAlphaは幅広フレーム、シングルシールドレンズのトレンドモデルで、通気性がよくノーズパッドにも工夫が凝らされているので快適そのもの。ウルトラレンズ技術の採用で街中での視界もくっきり。

ベースJ0604



## X-Fusion E-Slide Boost Roughcut HLR for E-MTBs



X-Fusionの29吋バイク用新モデルE-Slide Boost Roughcut HLRは重さが2000gに収まり、トラベル幅100mm/120mm/140mm。スタンションがアナダイズド仕上げのアルミ製で34mm。エアスプリングにHS comp/LS comp/リバウンド/エアスプリング調整が付いている。

ベースM1211

日本語

## Vision Metron 5D ACR



Metron 5D ACRは剛性とエアロ性に優れた一体型ハンドルバー・ステムで、エアロダイナミクスとエルゴノミクスを組み合わせた革新的形状は同社Aero-Ergo技術の中核を含むものだ。ステムクランプから若干上げて10度手前に曲げてあるので腕を自然な位置に置くことができ、より快適でより呼吸が楽になる。さらに翼のような形のパートップがエアロダイナミック性を高める。

強化カーボンファイバーにより比強度と剛性も増している。

サイズ・L100mm x W400+10mm, L110mm x W420+10mm, L120mm x W420+10mm, L130mm x W440+10mm・Compact 125mm drop, 80mm reach

仕上げ・UDカーボン 重さ・399g

ベースM1212

## HUITON SHIELD Bluetooth Speaker Backpack

技術なのかライフスタイルなのか？SHIELD Speaker Backpackは革新とともにある現代のモバイルライフスタイルに向けた設計のBluetooth組み込みスピーカーだ。

Bluetoothに繋ぐと自分のミュージックデバイスからの楽曲を最大24時間連続で聞ける。ワイヤレスでいつでもどこでも。軽量で耐候性があり容量14%。特製コンパートメントに13吋ラップトップと収めればぴったりだ。

ベースG0248



# New Products

## Chosen Road TC Hub



より高い伝導効率はChosenのRoad TCハブにおけるT.C.構造の大きな利点で、このシステムで歯がかみ合う表面を大きくすることでより少ないエネルギーロスでペダルのパワーを直送できる。ASP1786はまさにトップの性能と信頼性を備えた設計だ。

ブースJ0433

## DAPU MD250S

Mid Drive Motors

DapuのMD250Sは今年すでにEurobikeに出展されているがハイトルクでスムーズな走りを実現する高性能中央装着型モーターで、パワー出力250/350W、効率≥80%、トルク>80Nmで重さ3.5kg。フレームとのコーディネートが可能で外観も素晴らしい。

ブースF0512



## Hamax Caress



HamaxのチャイルドシートCaressは安全ベルトや背もたれ、足休めといった基本機能を片手の操作でできるため保護者には極めて使い易い。シートは傾けられるので走行の間子供も気持ちよく休める。シートの取り付けはフレームか荷台のいずれかを選べる。同製品は今年初め（2018年3月）のStiftung Warentestによる安全性および耐久性テストの総合でトップの座を獲得している。

ブースL0527

## SKS Germany Airstep

クラシックと最新のドイツ製技術を組み合わせたAirstepは最高品質の素材と練られたデザイン、使い易さが特徴で、圧力計が大きく、あらゆるバルブに対応する多弁ヘッドが従来の空気入れのイメージをガラリと変えた。螺旋ホース収納スペースを一体化。弾力性のあるホースは形を保持しながら自動的にスタートポジションにコイルバックする。人間工学に基づく正しいアルミ製フットペダルは難なく7 bar/102 psiの空気を注入する。注入後にボタンを押せばスティアアップが畳まれてしっかり固定されるコンパクト設計で収納にも便利。

ブースL1217



## MOYON Wheel Parts

Moyonは2008年以来ホイール部品を開発しハンドメイドでホイールセットを生産している。主力製品ラインはCNC製品質のチェーンホイールとホイール部品でOEMとODMの両需要に向けて供給している。

ブースG0650



## Qbicle Bike Porter

トラベルの根幹は世界とより確実に繋がる道であること。QbicleのBike Porterは自転車によるトラベルを計画するためのひとつの手頃な出発点になる。独自の折り畳み・ポップアップデザインによるプロテクションと収納キャパの高さに加えて、ボックス構造による防水性と持続可能性さらには再使用可能で重さわずか2.3 kgの超軽量、特許取得Q/R脱着可能ホイーリングデバイスTOGOもポイントになっている。3サイズを用意。

用可能で重さわずか2.3 kgの超軽量、特許取得Q/R脱着可能ホイーリングデバイスTOGOもポイントになっている。3サイズを用意。

ブースK1401



## Haven C-Ped Socks



新特許取得ペダルシステムHaven C-PED : チェコで設計・生産

C-Pedシステムの利点 :

- 信頼性100%のシュールリース
- ハードなサイクリングシューズが使えるプラットフォームに比べてホールドがしっかりしている
- 夏、冬、砂地、泥地などどんな条件下でも変わらぬ機能を発揮

ブースL0723

## Messingschlager Velosock



自転車用ラップVelosockは自転車の泥や埃を包み込んで輪行バッグの内装を護る。家庭に良し、オフィスに良し、車に良しで、数々の製品・デザイン賞を受賞。極めて柔軟な3Dストレッチ素材は洗濯機で洗えて、26吋～29吋まであらゆる自転車に使える。耐久性があつてしかも伸縮性が高い。トライアスロンほかトップアスリートも愛用。

問合せ先 : Antonia grim, ag@messingschlager.com

ブースJ0512

# New Products

## STARTS JUMP BICYCLOAD



Bicycloudシリーズは日常用と長距離ライド用の2つのレンジを用意。ビルトイン積載システムがどんなサイズに対してもフレーム内部の収容スペースを均等に保つ。フレーム/フォークセットはフィレットろう付けクロモリ製。サイズはスモール/ミディアム/ラージを揃え、耐水性ステンレスボックス（最大15kg）とソフトボックス（10.8kg）を用意。

ブースG0506

## Otion MicroCillia MTB Lever Grip

Otionのブレーキ/シフトレバーMicrotex Gripsはレバーの感覚を損ねることなく触覚性を高めている。天候がウエットでもドライでもグリップを増すことであらゆる条件下でも確信をもって使えるとともに、印刷可能な素材なのでカラーコーディネートやワイルドなカスタムグラフィックにもうってつだ。

詳しくは [www.otion.cc](http://www.otion.cc) で。

ブースL1004



## Topeak TubiBooster



TubiBoosterは2-in-1機能のチューブレス空気入れで、TubiBooster空気入れ一つと医療等級アルミ製タンク（1000cc）一つを組み合わせている。TubiBooster（空気入れ+タンク）をフロアポンプに取り付けて予めタンクに空圧を貯めておいて、それからチューブレスタイヤのバルブに取り付けて数秒で一気に大きな空気出力放ってチューブレスタイヤとホイールリムを満たせる仕組みだ。アウトドアでの緊急用にCO2カートリッジを携えることもできる。

ブースM0711

## Miranda ChainFlow® 3D Chainrings

MirandaのチェーンリングChainFlow® 3Dは特許取得のT字型トウス（歯）が特徴でチェーンの外れを防ぎ、どんな酷い泥道でも幅狭のトウスでは果たせない高いチェーン保持力を発揮する。チェーンリングのトウスがチェーンのローラーと直接噛みあって即接触、接触表面を最大限にしてチェーンの負荷分散とガイダンスを効率よく果たす。全体の動きがよりスムーズになるので耐摩耗性にも優れる。マウンテンバイクにうってつけ。

ブースL1216



## Seatylock Pentagon 220 D - lock

絶対安心の高級自転車用ロックD-Lockは特許取得の5角形15.3 mmクロスバーが特徴で、どんな円形クロスバーよりも強度が高い。パークリアランスの幅が市販モデルの中で最も広く、自転車をロックさせるための対象物の幅も大きく広げた。ボディデザインが洗練されているので幅広いクリアランスも新鮮なデザインに影響を与えない。素材、構造、メカニズムの良さが使い勝手の良さや安全性を高める要素となっている。多角装着アダプターでフレームへの装着角度が自在に変えられる。

ブースM1407



## Sunrising Xbat-M

発電ダイナモとシリーズライティングキットから成るBat-Mは通常のハブダイナモに比べて極めて軽量でコンパクト、摩擦や直接接触なしにホイールリム用に発電する。

自転車が静止している時も引き続きライトが照らされるようスーパーキャパシタ（コンデンサー）を装着することも可能だ。

ブースN0923a



## Lake Cycling CX332



LakeのCX332はDual IP1 Boa® Closureといった最新要素を盛り込んだクラシックなデザインと軽量カーボン製ダブルソウル（特許取得）が特徴で踵のホールがしっかり保てる。インナーソウルはセミフレキシブルなプラットホームで脚の膨らみや痺れに柔軟に対応できる。インナーソウルが丈夫なカーボン製アウトソウルに掛けられているので快適性を損ねず極めて堅牢なカーボンアウトソウルが使える。

ブースM0206

## Zéfal Sense Pro



Sense Proは同社の先発ボトルSenseとShark同様、素材に軽くて柔軟性が高く無臭の特製ポリプロピレンが使われており、飲み物がクリーンでピュアなまま保たれる。

オーバーモールド（外側被覆）のカバーによってボトルの握りがよく、二重閉めのLock-Capが100%防水を保証、持ち運びやすくなっている。シリコンプッシュで飲み心地は最高。クイックオープンバルブにより出し過ぎでこぼすことなく飲む量をコントロールできる。

ブースM0301

## 総括：サングラス

最新のサングラスとサイクリング  
光学で前方視界くっきり

豊富なカラーコンビネーションはスタイルにうるさいサイクリストにも好評

スタイルと機能の頂点にあるサイクリング用サングラスはユーザーの前方の視界を高めつつ走行にマイナスをもたらす要素を跳ねのける。しばしば驚くほどの量の技術を詰め込んだ光変性レンズが変化する状況に適應する一方で、疎水性コーティングと曇り止め処理が、支配する天候に関係なくレンズの機能性を保つ。もちろんこうした技術のどれもが、ライダーがそれらを身に着けたいと思わない限りは意味がない。常に強調されるとおり、スタイリングは極めて重要で人気のモデルはそのスタイルを何万通りにも換えられる。果たしてこのシーズンは将来のクラシックのデビューが見られるのだろうか。

トをも満足させるだけ豊富なカラーコンビネーションが提供できる。



EvolのKarbon 9Tのフレームは新開発カーボン採用でどんな頭の形にも合わせて曲げられる。重さはわずか6g



テンプルの調整が3段階にできるBBBの未来型新サングラスCommander

**BBB Hall 3/G0453** の未来型新サングラス Commanderはテンプルの調整が3段階にできるうえに、ハイエンドのグリルアミッドフレームを採用しているので快適なフィット感が得られる。調整可能なラバーノーズパッドと共同成型ラバーテンブルチップがグラスをしっかりと固定させる。グラスを通しての気流も強められる一方、レンズは疎水性の曇り止めコーティングの恩恵を受ける。一体成型デザインがスタイリッシュな外観に華を添えている。晴天用のスタンダードなスモークレンズ、暗いところで掛けるクリアレンズ、霧や露の掛かった日に掛けるイエローレンズの3モデルのほか光変性レンズも揃えている。複数の組み合わせが可能でスタイルにうるさいサイクリスト

カーボンファイバーは軽い、脆いとの評判も持つ。**Evol Hall 3/G0453** はそのカーボンを信じられないほど柔軟にし羽根のように軽いサングラスフレームを作るための理想的な素材へと変えた。同社の新しいサングラスKarbon 9とKarbon 9Tはどんな頭の形にも合わせられるように曲げられる。ともに鼻に楽に確実にフィットするための調整可能ノーズパッドが付いている。重さわずか19gという超軽量のスタンダードモデルは耐衝撃性に優れた偏光レンズを標準装備している。Karbon 9Tモデルはさらに進んだ処方レンズを必要とする人たちへと範囲を延ばして取り付け可能な光学フレームを追加している。このフレームも重さはわずか6g。

台湾での生産にこだわりを持つ**Envis Hall 3/G0262** は、各製品に対して20もの厳しい光学的品質および耐衝撃性テストを行っている。最高度の安全性が確認されて生まれた同社の最新モデルがTransformである。大きい未来型ワンピースレンズは抗紫



台湾で厳しいテストを重ねて生まれたEnvisの最新モデルTransform

外線100%で、最大400ナノメートルの波長ですべての光線を遮る。偏光レンズはまた曇り止めおよび疎油性コーティングも施されている。調整可能な滑り止めノーズ、テンブルさらにヘッドバンドによってしっかりと固定できる。処方箋が必要なライダーには追加オプションとして取り外し可能なRXフレームが用意されている。

つのカラーモデルはいずれも高品質の偏光レンズが使われている。偏光レンズは横光線を吸収しつつ縦波を通過させる。その結果はというと、光は偏光レンズを通してひとつの方向にしか向かないため反射（ぎらつき）が無くなることになる。

最後に極めてクレバーな製品を。今年のショーでd&iアワードを受賞した**Trieye**（のサングラスは背後にこっそり迫るライダーをとらえるとともに目がしっかり交通状況をとらえるよ



2つの新技術の組み合わせで視界くっきりの720armourのElfo



720armourのAlphaはシャープな視界に加え通気性、快適フィット

**720armour 1階/70604**

は二つの新モデルを展開している。第1がColor HighlighterとHEV 420 Blockerの二つの技術を掛け合わせたElfo。Color Highlighterは異なった状況で見る必要のある色を強くとらえ視覚をぼやけさせる色を除去する。一方HEV 420 Blockerは加齢による黄斑変性を引き起こす可能性のある紫と緑の可視光線と高周波光を除去する。子供サイズのユーザー用に男女兼用デザインによるオプションもある。トレンドモデルのAlphaは光強化システムによるコーティングと疎水性処理を施した幅広シングルシールドレンズを使用しているのでシャープな視界が得られる。さらに曇りが確実に起こらないようにレンズ上部に通気性をもたせているほか、ノーズパッドが快適感を高めている。

**Ziv Hall 3/G0436** の新シリーズBulkは1970年代の自転車ブームの遺産に刺激を受けた大きくてカラフルなフレームをベースにしたレトロなデザインが特徴だ。6つのカラーを揃えた同シリーズは、スタイルはレトロでも技術は最新そのもの。中でも最大の特性はその軽さと滑り止めノーズパッドで、この二つが合わさってフレームがしっかりと固定され快適感が高められる。6

うにしてくれる。目を前方に向けさせながら一体型バックミラーが頭をほんの少し傾けるだけで背後の状況をとらえてくれる。首を回す必要が省けて安全がキープできるとともに、エネルギーを貯めながら周囲の状況が把握できる。あらゆる走行状況をカバーするため3つのレンズを用意。それぞれが相互交換可能レンズ、UV400保護、曇り止め処理をはじめとするハイエンドスポーツサングラスの定番特性を備えている。スポーツ用にも日々の通勤用にも理想的なサングラスといえるだろう。



バックミラーも付いたTrieyeの頭脳型サングラス。スポーツ用にも日々の通勤用にも理想の逸品





## 熱門話題：共享自行車 為大眾建造的自行車

我們談到共享自行車，似乎總是連結到中國那滿坑滿谷、形象低廉的共享自行車。但事實上，自行車作為機動載具是很有潛力成為一筆大生意，尤其是在未來，預期會對級數較高的共享自行車以及優質零件的需求會持續提升，這對於自行車產業是很好的契機。

捷安特的YouBike共享自行車系統在台灣各大城市開花結果。

共享自行車在過去幾年，一直是自行車產業最熱議的話題之一：例如像是自行車龍頭廠商包括捷安特、Shimano等則認為他們的營業額降低是因為中國的共享自行車如雨後春筍般的冒出。確實，原本在城市之間的短程通勤，很多人會選擇購買一輛自行車來滿足通勤需求，但因為共享自行車的便利性，民眾只需要專屬的APP就能租到自行車，因此降低購買需求。這種只租不買的現象，尤其是傷害到入門等級的自行車，甚至是說危及到整個自行車產業。然而，中國的這股共享自行車風潮，如果要複製到歐美國家其實是不太可行，一部分的原因是像這類的共享自行車，通常是又笨重而且包括變速等騎乘性能都不會太好，因此不符合歐美的騎乘需求。根據業界人士的分析，像共享自行車這樣品質的自行車，估計的市售價大約落在台幣1萬2千元。

**巨大工業 [圖/M0820]**：YouBike是台灣各大城市的自行車租賃系統，必須使用駐車站來作為自行車租賃的停放點，這款自行車搭載的零件級數較高，比起中國那種游牧民族似的無樁式共享自行車，在市售價的部分差不多高了一倍。而如果你要追求更加便捷的體驗，UBER旗下的Jump Bike是一種提供電動自行車租賃服務的系統，而當然這種系統的級數更高了。還有一個在瑞士發表的電動自行車租賃公司—Publibike，估計這種電動車的市售價差不多要台幣6萬元，並且也不是每間車店都會販售這種高階電動車款。

考慮到這些不同區間的價格點，引起越來越多的廠商注意並有意投入共享自行車市場。必須體認到的是，共享自

行車最重要的關鍵不在於自行車的價格或是車身重量，而是需要一輛耐操好用、又不需要頻繁保養的車款，並且也需具備一定程度的防盜、防破壞的能耐。畢竟，在共享自行車的世界，若發生機械故障可能衍生的費用會高達兩倍，這是因為一旦自行車受損，不僅無法投入商業營運，而且還需要派人去維修、換零件。另一項共享自行車營運商考量的關鍵，是要如何讓營運成本最小化，也因此像是定點式的系統（有停靠站點）會比較受到青睞。



崑崙工業董事長陳崑崙展示全新專為共享自行車而生的一體式輪組。

在今年的台北自行車展上，會有好幾間公司展出適用於共享自行車的新產品。例如**崑崙工業 [圖/I0124]**就展出一款一體成型的五刀輪，這款輪組被設計的很堅固耐用、造型也非常特別，加上花鼓採用內部花鍵狀接口，可以讓前、後輪共用，以降低對於備輪的需求。如果

使用於前輪，可以搭配摩電花鼓以及貫通軸；或是在使用於後輪時，可以搭載三速內變速系統以及更寬一些的花鼓軸心，就能達成兼容前、後輪的共用性。



荷蘭品牌的Spanninga一直以來為共享自行車提供各式各樣的燈具。



荷蘭品牌的Spanninga一直以來為共享自行車提供各式各樣的燈具。



荷蘭品牌的Spanninga一直以來為共享自行車提供各式各樣的燈具。

由於共享自行車通常在密集的城市交通中騎行，因此車燈和反光片變成是一個重要的變動安全功能。**Spanninga [圖/M0310]** 一直以來都推出堅固耐用的車燈，也不易被破壞；而在巴黎的Velib Bike共享自行車，是搭載Luceo品牌的頭燈，這款頭燈還直接內置了反光片；至於摩拜自行車的前車燈則是搭載了Kendo車燈，後車燈則是搭載Pixeo車燈。甚至包括說級數較低的OFO小黃車也是搭載Spanninga燈具，前方大大的車燈直接內建反光片，而後車燈則是用Nr9太陽能車燈，同樣內建整合式反光片。

芬蘭品牌的**Herrmans [圖/M0210]** 推出一款可以完美整合於後貨架的LED車燈，並且藉由星型螺絲固定非常牢固。還有這款車燈可適用於摩電式花鼓或是電動車系統，這款車燈做的非常強壯，也可應用於各式車款，可有效提升警示功能。至於專為這款車燈而生的後貨架則是由**Massload [圖/I130]** 推出。



日月興 (Hubblevision)的這款RL7反光片的反射角度非常廣域，因此即便安裝在頭管或是擋泥板依舊可達到良好的警示效果。

設立於台中的日月興 Hubblevision 館/G0328a有超過20年打造各式反光片的經驗，從自行車的幅條、踏板反光片，到汽、機車所需更複雜的電鑄插件反光片。基於這樣的開發經驗所開發的這款RL7反光片的反射角度非常廣域，因此即便安裝在頭管或是擋泥板依舊可達到良好的警示效果。此外，由於安裝的位置不會突出於自行車，因此可避免反光片受到損害。

對於無樁式的公共自行車系統，俱有智慧型功能的車鎖可提供GPS位置紀錄並且紀錄騎乘資料等智慧功能。來自浙江的中立集團 4樓/L0012，推出的Zoli車鎖搭載了許多的智慧型功能，可針對無樁式的公共自行車系統提出客制化的智慧解決方案。例如可用網路對自行車進行即時監控、追蹤和管理，讓共享自行車的每一輛自行車狀態都能即時顯示。

合身的自行車騎乘體驗，主要仰賴於騎乘坐艙適當的Fitting。以共享自行車的車架設計而言，一般來說都會俱有低跨點的設計，而至於座墊高度或是龍頭長度，則需要巧妙的機制來調整，不僅要在無工具的情況下允許調整，而且要有防呆機制才能確保安全，因此對於零件製造商的研發能力是相當大的挑戰。

關於操控把手部分，信隆車料 1樓/L0112推出一款允許隱藏式走線的龍頭，讓整體質感更加俐落。另外，Zoom E-Tron則是專為Shimano Steps E-6000電動系統而生的操控系統，不僅同樣擁有隱藏式走線的機制，並且俱備一定程度的角度可調範圍，非常適用於共享電動車系統。



Zoom的E-Tron可調式龍頭可讓騎乘者調整騎乘座館，並且外型也相當俐落。



ExaForm這款Speed Up可調式升降座管，按下座管升降遙控鈕可以快速調整高達250mm的座管行程。

要如何快速調整自行車座管的高度，凱薩克 1樓/I0529總經理許榮裕指出他們的升降座管非常受到業界好評。例如這款入門級別的Speed Up就將升降調整鈕設計在座墊下方，而目前凱薩克採雙品牌策略 (Kind Shock以及ExaForm)，像是這款Speed Up就歸屬於ExaForm品牌。藉由這樣的機械可控

升降，可讓騎士視騎乘需求進行高達250mm的座管行程調整；而如果共享自行車採用升降座管，不僅可降低一些騎士不會使用座管快拆的困擾，更能夠提升座管的防竊能力。總結來說，這款Speed Up升降座管確實是共享自行車可以快速調整座墊高度的好物。

踏板是自行車上的必備品，卻也很容易被忽略，而要擔當公共自行車的踏板由於需要被頻繁使用，因此需要更強壯的培林軸承系統還有良好的踏面止滑設計。維格工業 Wellgo 1樓/I0517作為全台最大的踏板製造商推出共享自行車專用踏板，並且已經搭載在兩間知名的共享自行車的系統上：例如這款入門級數的B289採用塑鋼本體、鐵製軸承、防滑的踏板表面，這款已經搭載在Ofo共享自行車上了。而另一款級數高一些的C169DU則是採用鋁合金本體以及橡膠止滑設計，你可以在台灣各大城市的YouBike

系統看到這款踏板，從外觀就看得出質感更加優越。

最後壓軸登場的是鉦光實業 1樓/K0810已經專為共享自行車推出一款非常堅固耐用的VP-658踏板。根據鉦光的廠內測試是模擬120公斤的騎士重量，大幅超越一般業界測試的90公斤，這款踏板採用強壯的鋼製心軸，軸承直徑增加了30%。而其採用鋁合金材質的本體並在表面採用橡膠材質，以提升雨天騎乘的防滑性，並且即便在橡膠止滑面被磨壞後，這款踏板的斷面造型已提供非常好的止滑性，仍然能為騎士提供非常可靠的踩踏平台。



維格工業 (Wellgo)作為全球最大的踏板供應商之一，為Ofo以及YouBike提供可靠的踏板。



VP的這款VP-659踏板採用更嚴格的測試標準並搭載較大的培林軸承，可有效提升踏板的耐用性。



智慧型遙控鎖對於共享自行車（尤其是無樁式系統）很重要－來自浙江的中立集團，推出的Zoli車鎖搭載許多便捷的智慧型功能。

# 台灣自行車因e-bikes另起新局 電動自行車為台灣自行車產業充電

根據昨天公佈的初步官方統計數據，2018年前三季完成電動自行車出口量同比增長48%，價值增長52%。

台灣製造商在此期間出貨了價值2.69億美元的195,000輛電動自行車，平均單價為1,378美元。此類別提高了所有自行車的出口數據。由於電動自行車價值更高，台灣所有完整自行車的單價首次超過600美元，上漲23%至659美元。

這令人印象深刻，因為電動自行車佔

台灣出口自行車總數的不到12%，但此類別對整體數字產生了如此巨大的影響。

此數字由台灣自行車輸出業同業公會來自於財政部關務署的統計。單價高昂的電動自行車有助於彌補全球出貨量的下降。台灣自行車製造商共出口165萬輛完整自行車，比2017年同期下降7%。但這些出口價值為10.9億美元，增幅超過14%。這一上漲趨勢也提升了零部件出口，總值上漲了14%，達到10

億美元，總量提高4%。

以荷蘭和英國為首的歐洲市場仍然是台灣最大的出口市場，佔自行車產量的一半。美國是其最大的單一市場，佔台灣自行車出口總量的24%。

而美國更是一個高端市場，平均單價達到838美元。歐盟市場的部分，平均單價為527美元，這比2017年的數字增加35.5%。

台灣自行車整車輸出  
前十大市場產值 Jan - Sep 2018

國家	產值(百萬)	百分比對比*
美國	330.9	17.22
荷蘭	174.1	40.41
英國	80.5	-5.26
日本	53.8	19.89
澳洲	53.5	19.16
比利時	47.8	-0.85
加拿大	41.3	11.79
德國	36.6	21.39
中國	24.6	14.55
韓國	24.4	6.3

\* 百分比對比與2017比較

資料來源: 財政部關務署/台灣自行車輸出業同業公會

## 以色列進入自行車產業

在自行車產業充滿活力的初創版圖中，以色列還沒有加入這個行列，但來自以色列的Miga Safety公司，將選擇以完整的頭盔產品線，加入了自行車產業的版圖。

位在4樓/M1407攤位的Miga Safety與其以色列同胞Seaty Lock共用一個小攤位，但它專注於保護騎士的頭部而不是自行車。該公司成立於2018年6月，首次在台北自行車展上展出。儘管Miga Safety歷史不長，但它擁有豐富的經驗，其國際銷售總監Gahl Cohn過去常常騎登山車，並在頭盔和服裝方面積累了十年的經驗，深刻了解個領域騎士的需求和喜好。Miga Safety與工業設計師Amit Shita合作，該公司的設計和開

發總監。當他在比利時法蘭德斯工作時，Shita深受自行車文化薰陶。

在生產方面，Miga Safety與中國深圳地區的合作夥伴共享專業知識。它的產品線幾乎涵蓋了從幼兒到電動自行車騎士與雄心勃勃的運動員所有需求，仔細觀察他們的展台，展示了3D打印機中新增的一些附件，如藍牙喇叭。雖然大部分頭盔都是採用EPS泡沫襯裡的微殼結構，但該公司還提供了一系列更堅固的型號，由堅固的ABS塑料製成，適用於多用途自行車和電動自行車。作為一個有趣的轉折，Miga Safety並未隱藏其技術訣竅，並更願意與OE客戶分享其專業知識。

## 矽膠手握新星

說到騎士和自行車之間的接觸點，總是可以做得更好。因此，Reverse Components這家年輕公司為登山車自行車愛好者擴展了其握把和踏板系列產品。



展位在4樓/M0413a的Reverse Components公司來自於黑森林的中心地帶，是一家選手開創的公司，今年首次參加台北自行車展，作為Conebi展館的一部分。其旗艦產品是車把，車把，把手和踏板。由於手把的尺寸多元化變化，Reverse Components早在2014年就推出了各種尺寸的手握，直徑範圍從28到34mm，可供選擇。2016年，Seismic手柄被添加到陣容中，由於採用了柔軟的矽膠材料，因此可提供更多吸震效果。

但Reverse Components的銷售經理Steffen Herbst解釋說，市場上還有很多的需求：公司的經理有孩子，他們和孩子一起騎自行車。很快他們發現很難找到適合他們特定需求的踏板和把手。這就是Young Star系列的產生。鋁製踏板在去年的Eurobike上首次亮相，並配有可選的銷釘和較短的軸，以縮短寬度並提供更好的踩踏效率。

Young Star手握在台北自行車展首度發表：這款手握適合最年輕的登山車愛好者，這些手握寬100mm，直徑28mm。它們的一端帶有鎖定環，另一端帶有雙複合橡膠端部，增加了舒適性，安全性和耐用性。



# New Products

## Velo 少即是多



減法設計的整體美學：運用「少即是多」的概念拿掉座墊不必要的部分，再次優化您的騎乘體驗：

- 縮短長度／訴求極致性能表現
- 拿掉鉚釘／提升整體美學
- 消除縫合／強化防水性

**10717**

## 720Armour Elfo

Elfo這款眼鏡是專為孩童而生、結合最新科技的運動風鏡。最值得注目的是，720Armour最新研發的鏡片結合了兩項科技：強化視線動態對比以及阻擋HEV 420。強化視線的動態對比可讓穿戴者在不同的環境下一樣得到非常好的可視效果，並消除可能模糊視覺的顏色；而阻擋HEV 420則是可有效過濾有害的HEV光線（紫光／藍光，約400-500流明的光譜），長期曝露可能會導致黃斑病變。憑藉最先進的鏡片技術，單片式無遮擋的全視線鏡架提供非常舒適的穿戴感，使用PC鏡片的Elfo不僅為眼睛提供良好的保護性，同時提供銳利的視覺效果。

**10604**



## Crops Cromo



這是一款來自日本，專為城市運動而生的自行車。車架採用輕量化的鋁合金材質，搭載21速的變速系統，這款名為Cromo的折疊車提供相當不錯的爬坡性能以及加速性。此外，Cromo每一款車都搭載整合式的頭燈與尾燈，並配備自動光感偵測以及2.4G無線控制轉向燈，讓騎乘安全性大大加分。

**11018**

## X-Fusion TRACE 36 Roughcut HLR



Trace是36mm管徑系列前叉中，相容29吋輪徑的款式。專為29ER車款搭配長行程前叉與越來越具攻擊性車架角度的需求所開發。Trace提供了強壯的下盤平台以及順暢有效率的阻尼系統。靠著Trace輕量且強壯的結構配上高效率的阻尼，騎士再也不用望著技術路段興嘆，反過來不斷的找尋下一個關卡來挑戰。

**11211**

## Taya Chain 11速ONZE eBike專用鏈條

TAYA自潤型硬化技術DHT，靠著採用HV1800技術比起市場主流規格的HV1200-1400，讓表面硬度高於業界標準達50%。這款鏈條絕對有能耐來應付中置馬達馬達車款的驅動需求。另外，TAYA開發了GST(Green firST)高性能的環保型防銹處理，有效延長防銹，並對環境無害，符合歐盟綠色標準（符合RoHS、REACH、CPSIA標準）。還有獲得專利的「Sigma+」Quick-Link：這款快扣片的強度就跟其他的鏈節一樣堅固。

**K0610**



## INNOVA RUBBER Podium E-MTB輪胎

對於騎乘速度更快的e-Bike，Innova推出了一款名為Podium 27.5 x 2.6的e-Bike專用胎，這款胎採用特殊輪胎結構以及複合材料。專屬調配的複合材料具有良好的抓地力，在耐用性上也非常優越。在胎壁部分以Sport Guard 3.5mm及胎壁防護層等，提供非常優秀的防刺穿保護功能。通過ECE-R75認證，這款車胎適用的車輛速度可高達50 km/h。

這款適用於全地形騎乘的輪胎還具備Tubeless技術。霸氣的胎體外型加上巧克力胎面的設計，賦予這款車胎非常強大的騎乘性能。

**1708**




## 5LINKS FR700c MUSASHI / R.



這是一輛不折不扣的公路車，在日本焊接和組裝；特別是這輛公路車可以快速拆卸到很迷人的尺寸。值得一提的是，由7005鋁合金打造的車架，讓整車來到7.7公斤的輕量化造詣，也因此提供相當優越的騎乘表現以及容易攜帶的特性。採用特殊的輪組花鼓設計，允許車輛在收折的狀態時，讓鏈條與花鼓都固定在車架上，更方便於自行車的拆裝。

**N1309**

## DIZO BIKE S6



S6這款塗裝非常亮眼的公路車，塗裝靈感是來自於台灣職業自行車騎士劉書銘——他的座右銘「不浪費每一次心跳」。基於心臟跳動感覺的概念，車架上的粉紅色和藍色線條象徵著騎士身體的動脈和靜脈。S6車架採用Toray T800碳纖維製成，結合獨特的奈米科技樹脂配方，具有更好的抗衝擊性和順應彈性。這款超輕量的公路車無論是在騎乘性能、操控性、加速性、舒適性等表現都非常優秀。

**L1108**

# New Products

## SunUp Eco Spin Up 摩電式USB充電器



這款FD12自行車摩電式USB充電器是全球第一款智慧型微型發電機。它僅重350克，是唯一可以直接有效為Apple產品 (iPhone, iPad) 充電的產品。當速度超過13 km/h時，FD12可以提供1A輸出。它可為您提供輕快和穩定的騎乘體驗。

**N0503**

## NECO Rove-Dynamo Hub輪鼓發電機不斷電系統

Neco的這一款Rove輪鼓發電機不斷電系統，透過整流器將其交流電轉換為直流電，並可將電力儲存到Neco3-1 (智慧型便攜式充電器)。Neco3-1的電力輸出可為各式USB電子設備充電。2017年獲得TAIPEI CYCLE d&i獎項。

**I1130**



## Spanninga Pimento



Spanninga新款的PIMENTO尾燈完全體現了公司的研發哲學「100年來的安全領航者」。這款尾燈採用最新科技的COB LED，以極為迷你的尺寸卻可達到令人讚嘆的亮度輸出。外型設計的非常極簡俐落，卻又散發出個性及創意。由於採用可彎曲的COB LED，其照射範圍可以彎曲成各種形狀，並且可完美搭載於城市車、旅行車、e-Bike的後貨架。PIMENTO提供的摩電式花鼓版本具有減速警示功能，並另有一款專為e-Bike而生的款式。

**M0310**

## KS LEV-Ci

LEV-Ci作為最可靠，重量最輕，性能最好的升降座管，不僅在世界XC賽場上佔據了至高無上的地位，並且也當然可以應付全天候的騎乘需求。LEV-Ci經過精心設計，在這一款產品年份2020的LEV-Ci採用新的鍛造上夾具，造就出更安全的座墊固定平台，從而提升產品的可靠性及耐用性。所有的LEV-Ci升降座管都適用於遙控把手，可供另外選購。

[www.kssuspension.com](http://www.kssuspension.com)

**I0529**



## WELLGO C330

472克的C330採用鋁合金製造並包覆橡膠，表面處理採用振動銀。C330採用硼鋼和複合材質軸承，以加大踩踏平台及凹面設計，更容易完全將騎士的雙腳固定在踏板上。採用橡膠材質包覆，無論是哪一種鞋子，它都能提供更舒適的騎乘體驗，並且這款踏板也適用於e-Bike。

**I0517**



## ENVIS Transform



這款100%可抵擋UV400的運動風鏡採用抗衝擊的PC材質以及TR90鏡架，而在鏡架部分則是使用耐衝擊的偏光鏡片。為提供更佳的舒適性，Transform的防滑鼻墊採用可調式設計，並且鏡腳的彈性非常好，配有止滑墊片以及可更換的頭戴套和鏡腳。其他功能包括：可拆卸的RX鏡腳、疏油/防霧/防刮塗層，以及通過ANSI Z87安全認證

**G0262**

## Spank Vibrocore Dirt公路越野彎把



Spank MTB把手因為搭載Vibrocore™減震技術而享譽盛名，現在這項減震技術將被應用到礫車(Gravel)以及探險車款(Adventure)，這兩款彎把可讓騎乘舒適性再提升。此外，這兩款的把型是專為公路越野而生，搭載Vibrocore™減震核心區域。Spank專利的Vibrocore™是一種可過濾路面震動的減震科技，並進一步提升剛性、強度以及產品的耐用性。Flare 25 Vibrocore™這款把手擁有25度的外擴角，上把中心夾持位為31.8mm，擁有寬廣的圓把平台可安裝各式自行車配件，並且方便騎士變換各種握持姿勢；而加寬的下把位可為公路越野騎士提供更穩定舒適的騎乘感受。Wing 12° Vibrocore™的外擴角稍微小一些來到12度，上把位採用符合空氣力學的翼形把，可適用於公路車或是公路越野騎乘，對於愛好綜合型騎乘的騎士是理想的選擇。這兩款的Spank彎把都採用更嚴苛的MTB測試標準，確保不僅擁有整體舒適的騎乘感受，同時也非常的安全又耐操。

**L1002**

## SKS CSpeedrocker

Speedrocker擋泥板是專為Gravel礫石車、公路越野車和公路車開發，可相容於更寬的車胎並提供非常廣域的泥砂覆蓋範圍。Speedrocker其中之一的特點是前擋泥板上俱備雙擾流板，它引導著水和泥砂向下飛濺，而不會讓這些來自路面上的髒污飛噴到臉上。後擋泥板還具有可伸縮擴展的外形，可以提升防濺、抵抗砂礫的能力。還有這款擋泥板的側裙寬度是可調整的，因此可允許安裝於各式車架。另一個電點是俱有煞車線管的導板非常實用。整合式的U型支架搭配ESC Vario安全系統不僅可提升整體俐落美學，還可為擋泥板和輪胎之間預留更多的間隙。

**L1217**



# New Products

## M-Wave Elumatik



讓打氣不再是耗費力氣的工作，這款由Messingschlager推出的M-Wave Elumatik迷你電動打氣筒是打氣的美好解決方案。這款電動打氣筒最高可以打至約100psi，並且相容於法式、美式氣嘴。還有這款電動打氣筒體積非常小巧，可以輕鬆放入背包。電力的部分使用USB充電；而除了替自行車輪胎充氣之外，還可以為其他配件打氣。

J0512

## NEXO Otrajet 20吋實心胎

NEXO實心胎是一條完全不用打氣、不會爆胎、超高耐磨，使用NEXELL獨家高分子發泡技術製作。光是前面說到這款車胎完全不需要打氣，就可為騎士省下打氣以及檢查胎壓的工作。最後一點，NEXO實心胎的耐磨性非常好，在正常騎乘情況下估計可以使用3年以上。

K0202



## Alexrims RECON 3.0



Alexrims帶來最新的越野輪組提供優秀的性能表現。Recon 3.0是一款毫不妥協、專為Enduro以及All Mountain而生的輪組，可以應戰最嚴苛的騎乘路況。這款輪組的碳纖維框搭載Tubeless技術，並且使用專屬的扁平式直拉幅條。而花鼓部分也另有玄機，採用自主開發、製造的Bear Paws花鼓具有加大間距以及免工具調整的特性，並賦予輕量化以及非常優秀的耐用性。Recon 3.0分別提供27.5吋(1604克)以及29吋(1706克)兩種框高選擇。

J1117

## Evolo Karbon 9

彈性良好的鏡框設計，可適用於大部分的頭形及頭圍／可調節鼻托－易於貼合鼻子／偏光鏡片／抗UV400，通過EN ISO 12312-標準／19克超輕量化

G0458



## Bio-Key TouchLock Carabiner

TouchLock Carabiner是一款結合生物辨識以及藍牙通訊的自行車鎖。它可以透過使用者的指紋、臉部辨識，或是輸入PIN碼來啟動藍牙APP。這款車鎖的防水耐候性很不錯，而且可以與朋友或家人共享。TouchLock Carabiner車鎖非常重視用戶體驗，不僅提供防盜安全性，並且使用起來非常便利。它同時搭載生物辨識技術，也允許利用藍牙APP來控制車鎖；此外，此款車鎖還提供多種選擇。最後，它是可以共享使用的。

G0649



## APro Tech ERDP6.0CA-S 275+

ERDP 6.0CA-S 275+ 是一款專為征服極端地形而生的全避震車架。這款帶有肌肉線條感的車架神似於越野用機車的粗獷感。採用碳纖維打造的车架運用了EPS科技以及高模組係數的碳纖維。EPS科技是一種可讓碳纖維塑造出非常優秀的剛性表現，同時達到相當優秀的輕量化表現。而在後三角的部分則採用6061鋁合金材質，讓這款車架保有輕量以及直覺的騎乘性能。最值得一提是，這台車架的心臟是SHIMANO E-8000中置馬達系統，同時將電池整合入車架之中。

I1210



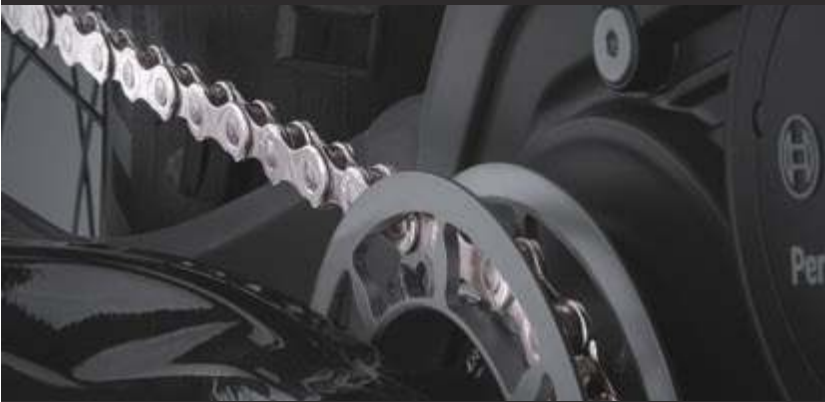
## Arisun Mount Baldy



Arisun的Mount Baldy是一款29吋支援Tubeless-Ready技術的輪胎，在胎面中段採用巧克力胎塊設計，打造出非常優秀的抓地力。另外，採用較短的花釘打造更佳的側向防滑性以及過彎性能。此外，配備有粗獷的胎側胎塊設計，再次提升過彎性能。複合式三層胎體材質是專為Freeride以及下坡車而生。提供多種輪徑的車胎選擇並且均搭載Tubeless Ready技術。

N0332

## KMC CHAIN-MATE e-Bike自行車鏈輪



KMC旗下一系列專為e-Bike而生的鏈輪、鏈條，重新定義了e-Bike的傳動系統的順暢性及耐用性。專用的鏈輪齒輪以及鏈片的角速度，可天衣無縫的與電控系統運作，並可提升鏈條的耐用性。KMC的e-Bike專屬零件是與知名e-Bike電機品牌密集技術合作的心血結晶，可說是與當前中置馬達系統和花鼓內置馬達系統的完美整合方案。

精工細膩打造業界最強：PIN-POWER達450kgf，獨家鉚合專利技術，貫串鏈條扎實穩固；騎行於各種崎嶇路面、嚴苛環境，交互產生的錯綜作用力，皆能強力征服，輕鬆克服。KMC很有自信的保證e101 EPT鏈條搭配KMC的3mm 1/8鏈輪，可達到10,000公里的耐用性。為此，KMC將e-Bike鏈輪和鏈條命名為Chain Mate「鏈條伙伴」，象徵著這兩款傳動系統的完美搭配性。

J0118

## World's Top 2 Cycle Shows 1 Advertising Package

Eurobike and the Taipei International Cycle Show are the world's #1 & #2 Bicycle Trade Shows. Use the official Show Dailies to project your marketing message and make the most of your valuable show investment...

Book an advertising package for both EUROBIKE and TAIPEI CYCLE Show Daily at once, and get a 20% DISCOUNT. For details, contact [sales@bikeshowdaily.com](mailto:sales@bikeshowdaily.com).



**TAIPEI  
CYCLE**

## SHOW DAILY

Credits & Contact Info

### Publisher

Tom Kavanagh  
K.B. Media Ltd.  
D16A275, Ireland  
[www.bikeshowdaily.com](http://www.bikeshowdaily.com)  
[tom@bikeshowdaily.com](mailto:tom@bikeshowdaily.com)

### Editor-in-chief

Doug McClellan  
+1.505.660.9957

### Design & layout

Keith Wealleans  
Gary Wang

### Onsite writing team

Laurens van Rooijen  
Sabinna Den  
Glenn Reeves

### Onsite photographer

Kenji Sugata

### Contributors

Dave Atkinson  
Wendy Booher  
Joseph Delves

### Taiwan Liaison

Greg Chang

### Advertising sales

Worldwide:  
[sales@bikeshowdaily.com](mailto:sales@bikeshowdaily.com)

### Taiwan:

Peggy Lee  
[peggy666@ms32.hinet.net](mailto:peggy666@ms32.hinet.net)

### Contact Us:

[TaipeiShowDaily@gmail.com](mailto:TaipeiShowDaily@gmail.com)

### Authorized By



[WWW.TAITRA.COM.TW](http://WWW.TAITRA.COM.TW)

### TAITRA liaison

Jasmine Wu

### Printed by

Chuen Fung  
群鋒企業  
Taipei, Taiwan

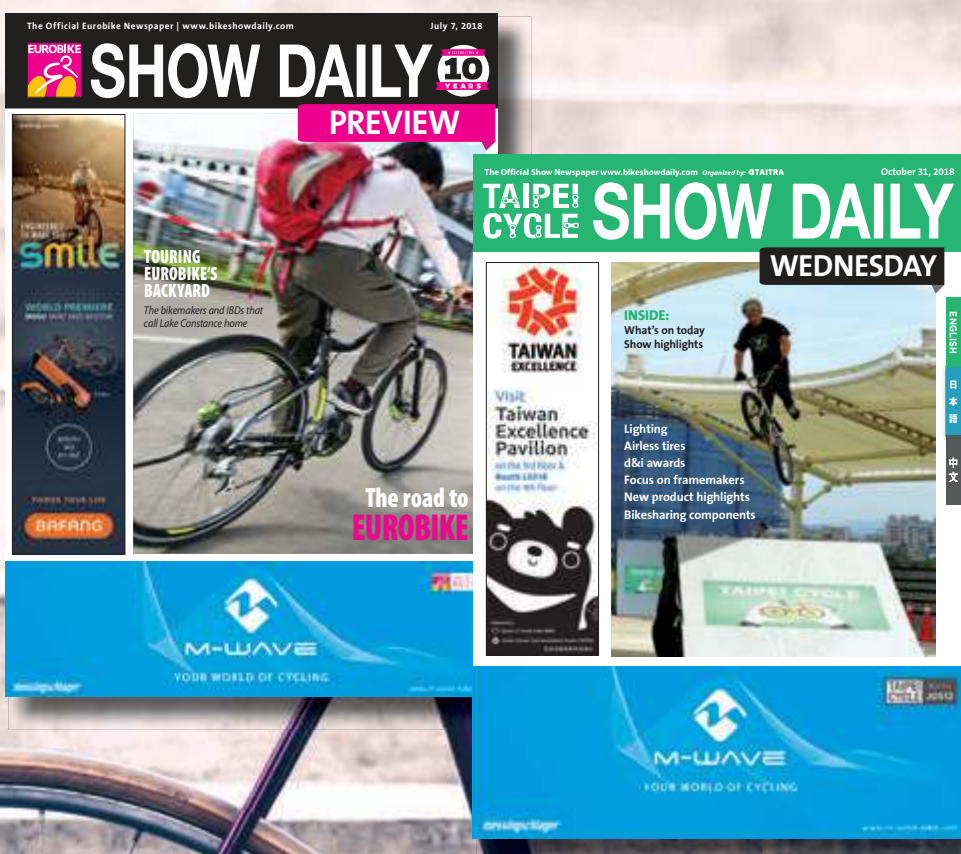
## Advertising index

Airace Enterprise	14	Messingschlager GmbH & Co. KG	1
Alex Global Technology Inc.	17	Miranda & Irmão Lda.	5
A-Pro Tech Co. Ltd.	9	Neco Technology Industry Co. Ltd.	44
Chosen Co. Ltd.	21	Otrajet Inc.	13
Crops Co. Ltd.	23	SKS Metaplast Scheffer-Klute GmbH	10
Chubutsu Precise Electronic Co. Ltd.	2	Sun Race Sturmey-Archer Inc.	19
Hutchinson	3	TAITRA	1
Innova Rubber Co. Ltd.	15	Taya Chain Co. Ltd.	11
Jiashan Shengguang Electronics Co. Ltd.	21	Velo Enterprise Co. Ltd.	28
Kind Shock Hi-Tech Co. Ltd.	25	Wellgo Pedal's Corp.	27
KMC Chain	7	Zhongce Rubber Group Co. Ltd.	20

© 2018 K.B. Media Ltd. All rights reserved.

No part of this publication may be reproduced without specific written permission from the publisher. We check. Neither the publishers nor writers can be held responsible for damage of any kind that may arise as a result of the content herein. Views expressed herein have not been approved by TAITRA and should not be construed as representing the opinions or policies of TAITRA.

# WORLD'S TOP 2 CYCLE SHOWS 1 Advertising Package



For details contact

[sales@bikeshowdaily.com](mailto:sales@bikeshowdaily.com)

or visit [www.bikeshowdaily.com](http://www.bikeshowdaily.com)

# neco

BOOTH  
I-1130



TAIPEI CYCLE  
d&i awards 2017

by ifi

Rove (Neco3+Neco4)

Dynamo Hub Power Generator-UPS System

(未來型前置電機)



NECO3



- 1. Dust Cover
- 2. Battery
- 3. Charger
- 4. Compression Plug



TAIPEI CYCLE  
d&i awards 2018

by ifi



www.necoparts.com



NECO5

